



**DUAL CREDIT
IN THE
ILLINOIS COMMUNITY COLLEGE SYSTEM**

FISCAL YEAR 2018

March 2019

Compiled by ICCB

Nathan R. Wilson, Deputy Director for Academic Affairs and Institutional Effectiveness

Jay Brooks, Senior Director for Research and Policy Studies

Michelle Dufour, Associate Director for Research and Policy Studies

Jana Ferguson, Associate Director for Research and Policy Studies

TABLE OF CONTENTS

Introduction	4
Dual Credit Definition and Illinois Legislative Background	5
Characteristics of Dual Credit Students (unduplicated)	5
<i>OVERALL HEADCOUNT</i>	5
<i>CHARACTERISTICS OF GENDER AND RACE/ETHNICITY</i>	6
<i>CREDIT HOURS ENROLLED BY DUAL CREDIT STUDENTS</i>	7
<i>GEOGRAPHIC REGION</i>	8
Dual Credit Course Count and Enrollment (duplicated)	8
<i>OVERALL COURSE COUNT AND ENROLLMENT</i>	8
<i>TRANSFER VERSUS CAREER AND TECHNICAL EDUCATION</i>	10
<i>INSTRUCTIONAL SITE</i>	13
Matriculation of Dual Credit Students to Illinois Community Colleges	13
Bibliography	15
Appendix A, B, and C Table Listing	16
Appendix D Illinois Community Colleges by Geographic Regions	17

Suggested Citation:

Illinois Community College Board. (2019). *Fiscal Year 2018 Dual Credit in the Illinois Community College System*. Springfield, IL: Author.

INTRODUCTION

Dual credit instruction allows academically prepared high school students to simultaneously earn credits that count toward a high school diploma and a college degree. Dual credit instruction delivers a “win-win” arrangement for all parties: students gain access to challenging college-level coursework to make their junior and senior years of high school more productive; students can prove to others and themselves that they have the ability to succeed in college; college costs can be reduced for parents and students; time to degree at college can be shortened; and the enhanced high school and college faculty dialogue can contribute to a better alignment between secondary and postsecondary education. Consequently, as dual credit instruction has a positive impact on postsecondary completion, there is a growing emphasis among policy makers on the value of dual credit enrollment for all students and especially those who are traditionally underserved in higher education.

Highlights of Dual Credit in Fiscal Year 2018:

- In Illinois, during fiscal year 2018, a total of 59,039 individual (i.e., “unduplicated”) high school students enrolled in one or more community college dual credit courses.
- Illinois community colleges offered a total of 11,270 dual credit courses in fiscal year 2018, which was an increase of 2.5 percent from the previous year (N = 10,994).
- One in nine students (11.4 percent) taking one or more Illinois community college credit courses was a high school dual credit student.
- Overall, in fiscal year 2018, dual credit duplicated enrollment (N = 117,672) increased 5.4 percent compared to one year ago (N = 111,643).

Data for this report derive from the Illinois Community College Board’s (ICCB) Centralized Data System and, specifically, the Annual Student Enrollment and Completion (A1) student-level submission (Appendix A and C Tables) and Annual Course Data (AC) student-level submission (Appendix B Tables) from Illinois community colleges. Information from the **A1 submission** is used in the report to describe the characteristics of high school students who enrolled in dual credit courses. A1 data are required for all students who are officially enrolled in a credit course at an Illinois community college any time during the specified fiscal year. A1 enrollments are **unduplicated** end-of-year counts. Duplicated enrollment and course data derive from ICCB **AC submissions**. AC enrollments are **duplicated**, meaning students are counted for each course they enroll in (e.g., a student enrolling in three dual credit courses is counted as three enrollments). The AC record submission includes dual credit identifier information that is used to generate dual credit course counts, enrollments, and average class sizes. For Illinois community colleges, student-level data is collected by ICCB for each fiscal year. A fiscal year represents student activity in a July 1 through June 30 academic year.

DUAL CREDIT DEFINITION AND ILLINOIS LEGISLATIVE BACKGROUND

Dual credit is an instructional arrangement where an academically qualified high school student enrolls in a college-level course and, upon successful course completion, concurrently earns both college credit and high school credit. Dual credit reflects strong and well established secondary-to-postsecondary articulation and alignment.

The Dual Credit Quality Act (Public Act 96-0194) was approved by the governor on August 10, 2009, with an effective date of January 1, 2010. The Act required the ICCB and the Board of Higher Education (IBHE) to develop policies regarding dual credit. In 2018, the Dual Credit Quality Act was significantly amended outlining specific, required elements within dual credit partnership agreements and limiting out-of-state dual credit offerings. Although the general purpose of the Act remains the same, the Act gives school districts a greater ability to offer dual credit courses to students, as it requires a local community college to agree to offer such courses if a school district requests them. The law includes an “Illinois-first” clause that prohibits school districts from offering dual credit courses from out-of-state institutions without first asking the local community college if the same courses are offered there. The law helps to make college more affordable. The newly amended Dual Credit Quality Act ([PA-100-1049](#)) took effect January 1, 2019.

The instructors for dual credit courses shall be selected, employed and evaluated by the postsecondary institution. Qualified instructors must hold the appropriate credentials and demonstrate teaching competencies. [The ICCB Administrative Rules](#) [Section 1501.507 (11)] outlines these minimally acceptable standards. Dual credit instructors must be able to participate in all activities available to adjunct faculty [[\(110 ILCS 27/\) Dual Credit Quality Act](#)].

Also taking effect on January 1, 2019, [PA-100-0792](#) amends the Illinois School Code by prohibiting a school board from capping the number of courses or credits a student can earn via dual credit if the courses are taught by an Illinois Instructor.

CHARACTERISTICS OF DUAL CREDIT STUDENTS (UNDUPLICATED)

OVERALL HEADCOUNT

The Illinois Community College System recorded a total of 59,039 high school students enrolled in dual credit courses during fiscal year 2018. Currently, **all** Illinois community colleges offer dual credit courses. **Table 1** provides the comparison of annual dual credit headcount enrollments in Illinois public community colleges in fiscal years 2014 through 2018. Annual dual credit enrollments increased 2.0 percent compared to the previous year (N = 57,897) and 17.9 percent compared to five years ago (N = 50,091). Among Illinois’ 48 colleges, 19 colleges reported more than 1,000 dual credit enrollments in fiscal year 2018. College of DuPage reported the most dual credit enrollments (N = 5,084), followed by Joliet Junior College (N = 4,169) and Lewis and Clark Community College (N = 3,938) (Appendix Table A-1).

Each of the 48 community colleges in Illinois provided dual credit courses in fiscal year 2018.

High school students enrolled in dual credit courses comprised **11.4 percent of all credit enrollment** (N = 519,387) at Illinois community colleges in fiscal year 2018. Dual credit students comprised more than twenty percent of all credit enrollments in five Illinois’ colleges, more than ten percent in 29 colleges, and fewer than two percent in two colleges. Kaskaskia College reported the largest proportion of dual credit enrollment in comparison to the college’s total credit enrollment in fiscal year 2018 (41.1 percent), followed by Lewis and Clark Community College (41.0 percent) and Highland Community College (25.0 percent) (Appendix Table A-2).

Table 1
Comparison of Annual Dual Credit Enrollments in Illinois Public Community Colleges
Fiscal Years 2014-2018

	FY 2014	FY 2015	FY 2016	FY 2017	FY 2018
Headcount	50,091	51,718	54,871	57,897	59,039
% Change	0.7%	3.2%	6.1%	5.5%	2.0%

SOURCE OF DATA: ICCB Centralized Data System—Annual Enrollment and Completion (A1) Data

CHARACTERISTICS OF GENDER AND RACE/ETHNICITY

Overall, **Table 2** shows nearly equal proportions of female (52.0 percent) and male (48.0 percent) high school students enrolled in community college courses in fiscal year 2018 (Appendix Table A-3).

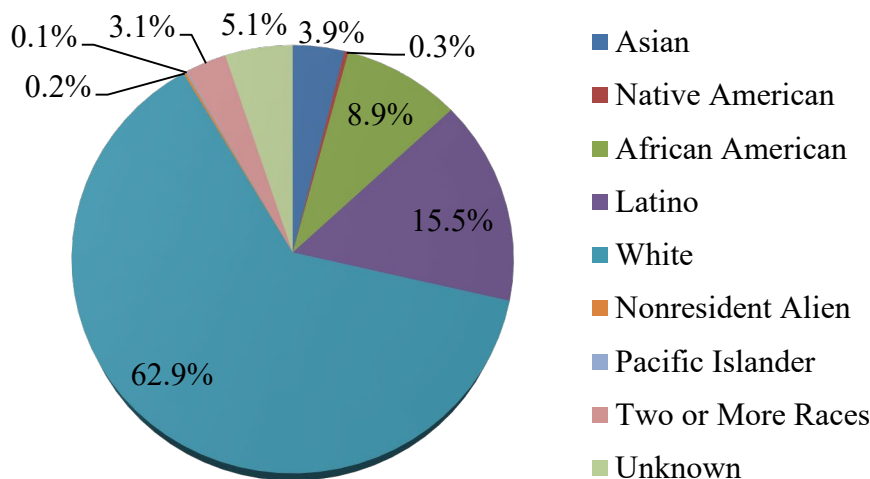
Table 2
Dual Credit Enrollment by Gender in Fiscal Year 2018

Gender	Number	Percent
Male	28,344	48.0%
Female	30,695	52.0%
Total	59,039	100.0%

SOURCE OF DATA: ICCB Centralized Data System—Annual Enrollment and Completion (A1) Data

Figure 1 depicts the race/ethnicity of high school students enrolling in community college dual credit courses in fiscal year 2018. Nearly two-thirds of dual credit students were White (62.9 percent). Latino dual credit students accounted for 15.5 percent and African American students for 8.9 percent in fiscal year 2018. Students identifying themselves as Asian (3.9 percent), Two or More Races (3.1 percent), Native American (0.3 percent), Nonresident Alien (0.2 percent), and Pacific Islander (0.1 percent) represented a small portion of dual credit students (Appendix Table A-4). Dual credit participation was lower among minority high school students than White high school students in fiscal year 2018. Out of 226,276 minority students (whose ethnicity was known) enrolled in credit coursework in Illinois public community colleges in fiscal year 2018, 8.3 percent of students were enrolled in dual credit courses (N =18,870). In comparison, out of 272,130 White students enrolled in credit coursework in Illinois public community colleges in fiscal year 2018, 13.7 percent of students were enrolled in dual credit courses (N=37,153).

Figure 1
Race/Ethnicity of High School Students Taking Dual Credit Courses in Fiscal Year 2018

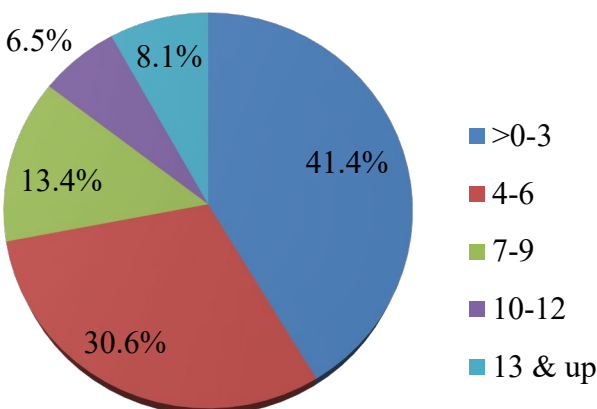


SOURCE OF DATA: ICCB Centralized Data System—Annual Enrollment and Completion (A1) Data

CREDIT HOURS ENROLLED BY DUAL CREDIT STUDENTS

Figure 2 displays dual credit enrollment by number of enrolled credit hours in fiscal year 2018. Of the 59,039 high school students that enrolled in dual credit coursework in fiscal year 2018, four out of ten students (41.4 percent) enrolled in college-level coursework of up to three credit hours, three out of ten students (30.6 percent) enrolled in four to six credit hours, one out of five students (19.9 percent) enrolled in seven to twelve credit hours, and fewer than one out of ten students (8.1 percent) enrolled in 13 or more credit hours of college-level coursework in fiscal year 2018 (Appendix Table A-5).

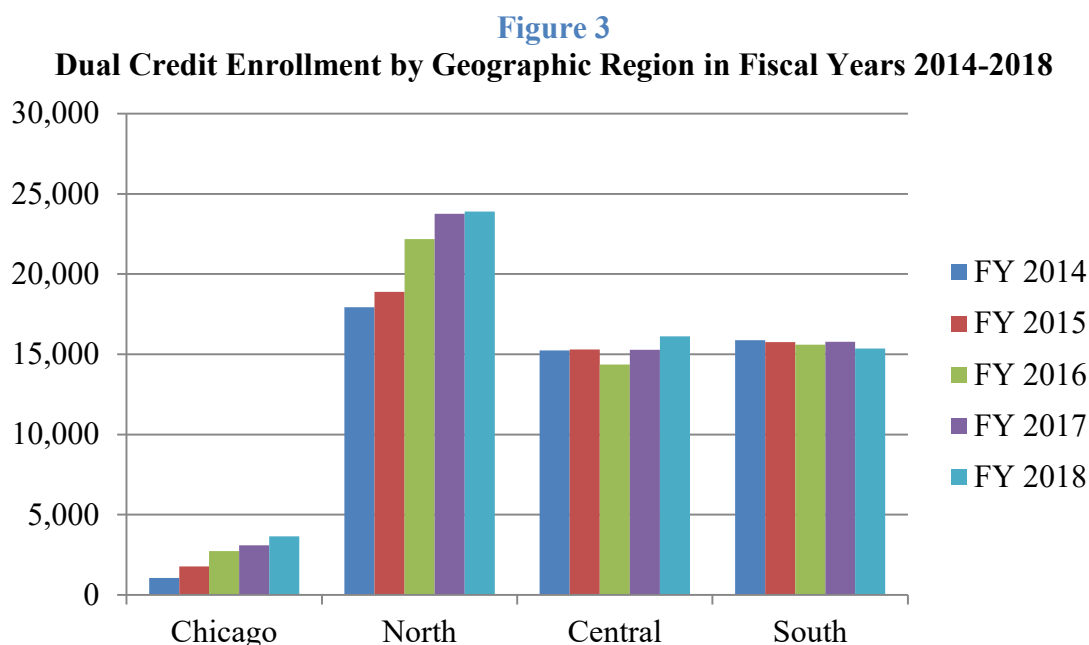
Figure 2
Dual Credit Headcount Enrollment by Number of Enrolled Hours
Fiscal Year 2018



SOURCE OF DATA: ICCB Centralized Data System—Annual Enrollment and Completion (A1) Data

GEOGRAPHIC REGION

Figure 3 compares dual credit enrollment by geographic region. Illinois community colleges in the North region (N = 23,893) had the most dual credit students in fiscal year 2018 followed by the geographic regions of Central (N = 16,124), South (N = 15,367), and Chicago (N = 3,655). From fiscal year 2014 to 2018, the largest increase in dual credit occurred in Chicago (+246.4 percent) followed by North (+33.3 percent), and Central (+5.8 percent), while South experienced a decrease in dual credit enrollment (-3.2 percent). The list of colleges in each geographic region is provided in Appendix D.



SOURCE OF DATA: ICCB Centralized Data System—Annual Enrollment and Completion (A1) Data

DUAL CREDIT COURSE COUNT AND ENROLLMENT (DUPLICATED)

In the following portion of the report, dual credit course count and enrollment data are organized by broad programmatic area based on the Program Classification Structure (PCS).

OVERALL COURSE COUNT AND ENROLLMENT

Illinois community colleges offered a total of 11,270 dual credit courses (duplicated) in fiscal year 2018, which was an increase of 2.5 percent from the previous year (N=10,994). Dual credit courses accounted for 7.9 percent of all credit courses (N = 143,254) and 9.7 percent of all Transfer or Career and Technical Education courses in fiscal year 2018 (N = 116,355). Appendix Table B-1 provides dual credit course count in fiscal years 2015 through 2018 for each community college. Southwestern Illinois College reported the most dual credit courses (N = 1,109), followed by Rock Valley College (N = 777) and Danville Area Community College (N =

618). Compared with the previous year, 25 colleges reported an increase in the number of dual credit courses, while 22 reported decreases, and one reported little or no change (less than one percent).

Duplicated dual credit course enrollments totaled 117,672 in fiscal year 2018, which was an increase of 5.4 percent compared to 2017 (N = 111,643). Among Illinois' community colleges, 25 colleges reported increases in dual credit enrollments, while 20 colleges exhibited decreases in comparison to fiscal year 2017. Three colleges experienced little or no change (less than one percent). Dual credit course enrollment accounted for 6.6 percent of all credit course enrollments (N = 1,774,551) and 7.6 percent of all Transfer or Career and Technical Education credit course enrollments (N = 1,542,824) in fiscal year 2018. Lewis and Clark Community College reported the most dual credit enrollments (N = 8,909) in fiscal year 2018, followed by Southwestern Illinois College (N = 7,793) and College of DuPage (N = 7,551) (Appendix Table B-2).

More than one hundred seventeen thousand enrollments occurred across dual credit courses in fiscal year 2018.

As seen in **Table 3**, the average dual credit class size was 10.4 students per class in fiscal year 2018, a 2.8 percent increase from 2017 (N = 10.2). The average dual credit class size ranged from 4.1 students at Danville Area Community College to 23.7 students at Illinois Central College in fiscal year 2018 (Appendix Table B-3).

Table 3
Dual Credit Course Count, Enrollment (Duplicated), and Average Class Size
Fiscal Years 2015-2018

	2015	2016	2017	2018
Number of Courses	9,986	10,740	10,994	11,270
Number of Enrollments	99,343	105,361	111,643	117,672
Average Class Size	9.9	9.8	10.2	10.4

Source of Data: ICCB Centralized Data System—Annual Course (AC) Data

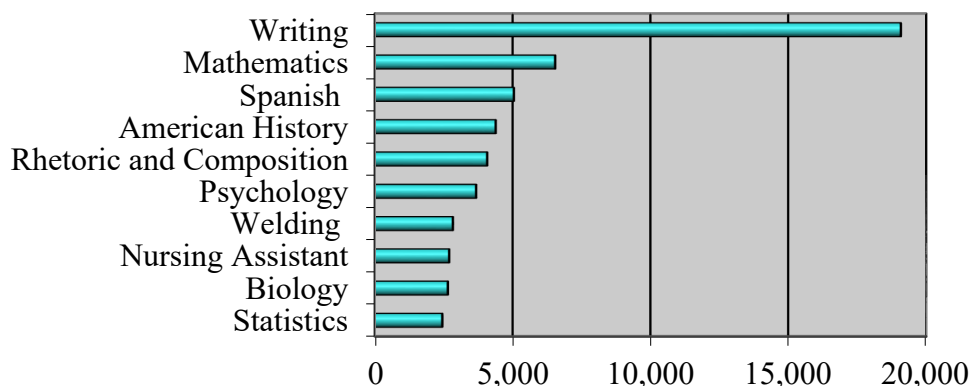
The five highest dual credit course enrollments by program area (2-digit CIP) in fiscal year 2018 were in English Language and Literature/Letters (N = 24,605); Mathematics and Statistics (N = 10,578); Business Management, Marketing, and Related Supportive Services (N = 9,585); Health Professions and Related Programs (N = 7,988); and Computer and Information Sciences and Support Services (N = 6,028) (Appendix Table B-14).

Appendix Table B-15 provides statewide dual credit course enrollment by Career Cluster. The top five Career Clusters in fiscal year 2018 were Arts, Audio/Video Technology and Communications (N = 29,090); Science, Technology, Engineering and Mathematics (N = 25,371); Education and Training (N = 14,045); Business Management and Administration (N = 7,682); and Manufacturing (N = 6,767). The Career Cluster brand is a registered trademark of [Advance CTE](#).

Course enrollments in the ten largest programs accounted for 45.4 percent (N = 53,442) of all dual credit course enrollments in fiscal year 2018. As depicted in **Figure 4**, the ten highest dual credit enrollments overall by 6-digit Classification of Instructional Programs (CIP) code in

academic year 2018 were in Writing, General, which was formerly reported under English Composition (N = 19,082); Mathematics, General (N = 6,545); Spanish Language and Literature (N = 5,046); American History (United States) (N = 4,386); Rhetoric and Composition, which was formerly reported under Speech and Rhetorical Studies (N = 4,078); Psychology, General (N = 3,676); Welding Technology/Welder (N = 2,833); Nursing Assistant/Aide and Patient Care Assistant/Aide (N = 2,697); Biology/Biological Sciences, General (N = 2,650); and Statistics, General (N = 2,449). Six out of the ten largest programs experienced increases from 2017 (Appendix Table B-4).

Figure 4
Top Ten Dual Credit Course Enrollments in Fiscal Year 2018

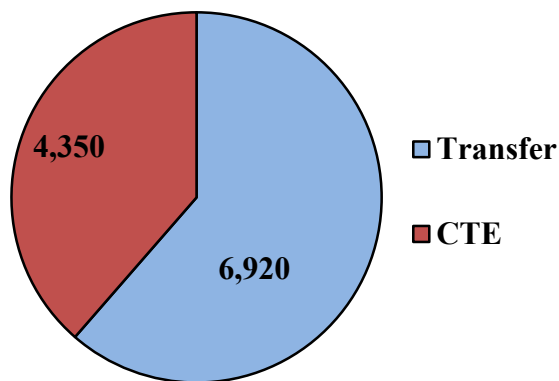


Source of Data: ICCB Centralized Data System—Annual Course (AC) Data

TRANSFER VERSUS CAREER AND TECHNICAL EDUCATION

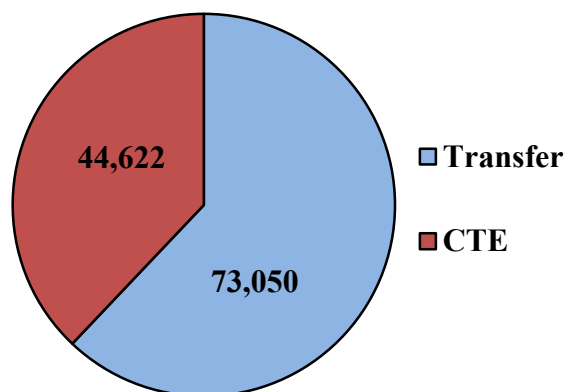
Figure 5 and **Figure 6** depict dual credit course count and enrollment in Transfer courses and Career and Technical Education (CTE) courses in fiscal year 2018.

Figure 5
Dual Credit Course Count in Fiscal Year 2018



Source of Data: ICCB Centralized Data System—Annual Course (AC) Data

Figure 6
Dual Credit Course Enrollment in Fiscal Year 2018



Source of Data: ICCB Centralized Data System—Annual Course (AC) Data

As Table 4 shows, Illinois community colleges offered 6,920 Transfer dual credit courses in fiscal year 2018 (Appendix Table B-5), which was 61.4 percent of all dual credit courses offered. This is a 1.7 percent increase compared to the previous year (N = 6,804). The average dual credit class size in Transfer education was 10.6 students in fiscal year 2018 (Appendix Table B-7).

Table 4
Transfer and CTE Dual Credit Course Count in Fiscal Years 2015-2018

	2015	2016	2017	2018
Transfer	6,112	6,775	6,804	6,920
CTE	3,874	3,965	4,190	4,350
Total	9,986	10,740	10,994	11,270

Source of Data: ICCB Centralized Data System—Annual Course (AC) Data

As seen in Table 5, Transfer dual credit course enrollments (Appendix Table B-6) accounted for 62.1 percent of all dual credit course enrollments in fiscal year 2018. Enrollments in this area increased to 73,050 in fiscal year 2018, an increase of 5.8 percent from 2017 (N = 69,066). Appendix Table B-8 shows the top five enrollments in Transfer courses: Writing, General (N = 19,027); Mathematics, General (N = 6,545); Spanish Language and Literature (N = 5,046); American History (United States) (N = 4,386); and Rhetoric and Composition (N = 4,072). Enrollments in these five courses accounted for 33.2 percent of all dual credit enrollments in fiscal year 2018.

Table 5
Dual Credit Course Enrollment (Duplicated) in Transfer and CTE Courses
Fiscal Years 2015-2018

	2015	2016	2017	2018
Transfer	61,698	66,118	69,066	73,050
CTE	37,645	39,243	42,577	44,622
Total	99,343	105,361	111,643	117,672

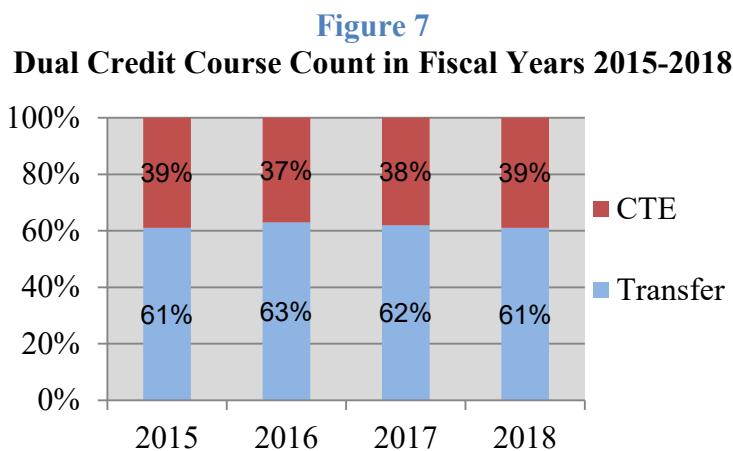
Source of Data: ICCB Centralized Data System—Annual Course (AC) Data

Dual Credit in the Illinois Community College System in Fiscal Year 2018

The Career and Technical Education dual credit course count was 4,350 in fiscal year 2018, which was 38.6 percent of all dual credit courses offered. This is an increase of 3.8 percent from fiscal year 2017 (N = 4,190) (Appendix Table B-9). The average dual credit class size in in this area was 10.3 students in fiscal year 2018 (Appendix Table B-11).

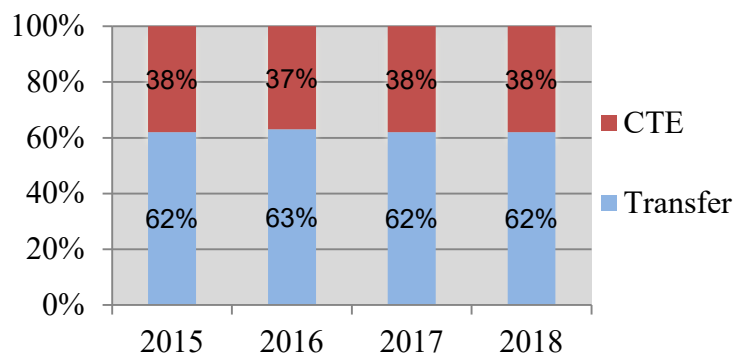
Dual credit course enrollments in Career and Technical Education increased to 44,622 in fiscal year 2018, which is a 4.8 percent increase over fiscal year 2017 (N = 42,577). Appendix Table B-12 shows that the highest enrollments in this area were in Welding Technology/Welder (N = 2,833); Nursing Assistant/Aide and Patient Care Assistant/Aide (N = 2,697); Computer Programming/Programmer, General (N = 2,205); Business/Office Automation/Technology/Data Entry (N = 2,091); and General Office Occupations and Clerical Services (N = 2,038). Enrollments in these five courses accounted for 10.1 percent of all dual credit enrollments in fiscal year 2018.

Figure 7 and **Figure 8** depict the proportion of Transfer and Career and Technical Education dual credit course counts and enrollments in fiscal years 2015 through 2018. The proportion of Transfer to CTE remained steady across the four years.



Source of Data: ICCB Centralized Data System—Annual Course (AC) Data

Figure 8
Dual Credit Course Enrollment in Fiscal Years 2015-2018

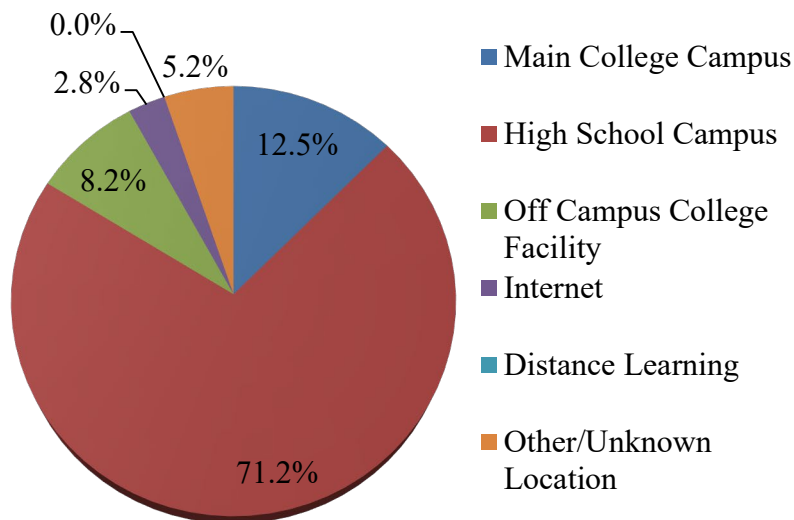


Source of Data: ICCB Centralized Data System—Annual Course (AC) Data

INSTRUCTIONAL SITE

Figure 9 displays dual credit enrollment by instructional site. In fiscal year 2018, nearly three out of four high school dual credit students (71.2 percent) enrolled in dual credit courses at the high school campus. One out of five high school dual credit students attended a main college campus (12.5 percent) or an off campus college facility (8.2 percent). The remaining 8.0 percent of dual credit students either chose online/distance education classes (2.8 percent), or some other/unknown location (5.2 percent) to enroll in dual credit courses (Appendix Table B-16).

Figure 9
Dual Credit Enrollment by Instructional Site in Fiscal Year 2018

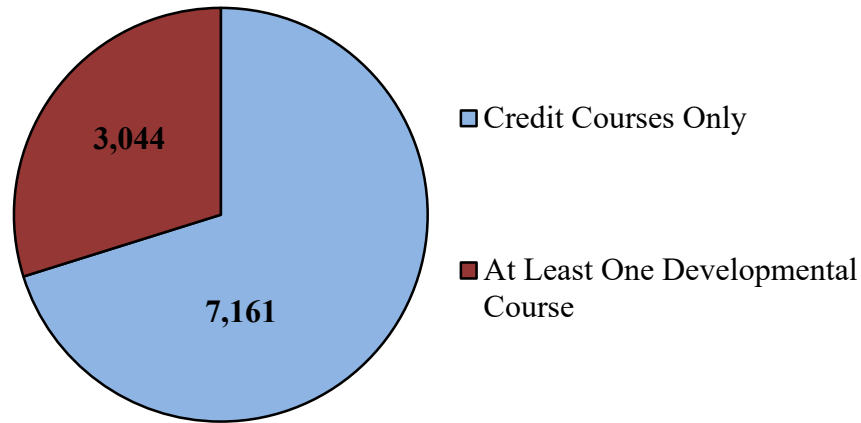


Source of Data: ICCB Centralized Data System—Annual Course (AC) Data

MATRICULATION OF DUAL CREDIT STUDENTS TO ILLINOIS COMMUNITY COLLEGES

Of 47,543 high school seniors who had enrolled in the dual credit coursework in fiscal year 2017, about one in five students (21.5 percent) entered the same community college in fiscal year 2018 that they had attended as dual credit students (N = 10,205). More than two-thirds of those students enrolled in credit courses (70.2 percent), while the remaining students enrolled in developmental courses (29.8 percent). Comparative data inclusive of all first-time Illinois community college students (both prior dual credit and non-dual credit students) show approximately 50 percent enrolling in a developmental education course at entry ([Illinois Community College Statewide CCA Outcomes](#)—Progress Metric One and Two). Taking dual credit courses reduces the need for developmental education and accelerates the time-to-degree for students.

Figure 10
Fiscal Year 2017 Dual Credit Students Enrolling in the Same Community College in Fiscal Year 2018



SOURCE OF DATA: ICCB Centralized Data System—Annual Enrollment and Completion (A1) Data

The largest proportion of students who enrolled in dual credit classes as senior high school students in fiscal year 2017 and the following year enrolled in the same community college was reported by Elgin Community College (62.5 percent), followed by Lincoln Trail College (49.6 percent) and Rend Lake College (45.3 percent). (Appendix Table C-1).

BIBLIOGRAPHY

- Advance CTE: State Leaders Connecting Learning to Work. (2018). Career Clusters. Silver Spring, Maryland. <https://careertech.org/career-clusters>
- Illinois 96th General Assembly. (2009). Higher Education (110 ILCS 27/) Dual Credit Quality Act. Springfield, IL: Illinois General Assembly. <http://www.ilga.gov/legislation/ilcs/ilcs3.asp?ActID=3117&ChapterID=18>
- Illinois 100th General Assembly. (2018). Public Act 100-0792. Springfield, IL: Illinois General Assembly. <http://www.ilga.gov/legislation/publicacts/fulltext.asp?Name=100-0792>
- Illinois 100th General Assembly. (2018). Public Act 100-1049. Springfield, IL: Illinois General Assembly. <http://www.ilga.gov/legislation/publicacts/fulltext.asp?Name=100-1049>
- Illinois Community College Board. (December 2018). Administrative Rules of the Illinois Community College Board. Springfield, IL: Illinois Community College Board. https://www.iccb.org/iccb/wp-content/pdfs/manuals/ICCB_SystemRules_Manual.pdf
- Illinois Community College Board. (March 2018). Dual Credit in the Illinois Community College System. Springfield, IL: Illinois Community College Board. https://www.iccb.org/iccb/wp-content/pdfs/reports/2017_Dual_Credit_Report.pdf
- Illinois Community College Board. (2018). Illinois Community College Statewide CCA Outcomes: Illinois Community College Board. <https://www.iccb.org/data/complete-college-america/complete-college-america-illinois-outcomes/>

APPENDIX A

Unduplicated Enrollment Counts

- A-1 Dual Credit Headcount Enrollment by College, FY 2014-2018
- A-2 Dual Credit Headcount Enrollment vs. Overall Credit Enrollment by College, FY 2018
- A-3 Dual Credit Headcount Enrollment by Gender and by College, FY 2018
- A-4 Dual Credit Headcount Enrollment by Ethnic Origin and by College, FY 2018
- A-5 Dual Credit Headcount Enrollment by Number of Enrolled Hours and by College, FY 2018

APPENDIX B

Duplicated Course and Enrollment Counts

- B-1 Dual Credit Course Count by College, FY 2015-2018
- B-2 Dual Credit Course Enrollment by College, FY 2015-2018
- B-3 Average Dual Credit Class Size by College, FY 2015-2018
- B-4 Top 10 Dual Credit Course Enrollments by CIP, FY 2015-2018
- B-5 Dual Credit Course Count by College in Transfer Education, FY 2015-2018
- B-6 Dual Credit Course Enrollment by College in Transfer Education, FY 2015-2018
- B-7 Average Dual Credit Class Size by College in Transfer Education, FY 2015-2018
- B-8 Top 5 Dual Credit Course Enrollments by College in Transfer Education, FY 2018
- B-9 Dual Credit Course Count by College in Career and Technical Education, FY 2015-2018
- B-10 Dual Credit Course Enrollment by College in Career and Technical Education, FY 2015-2018
- B-11 Average Dual Credit Class Size by College in Career and Technical Education, FY 2015-2018
- B-12 Top 5 Dual Credit Course Enrollments by College in Career and Technical Education, FY 2018
- B-13 Dual Credit Course Enrollment by 6-digit CIP, FY 2015-2018
- B-14 Dual Credit Course Enrollment by 2-digit CIP, FY 2015-2018
- B-15 Dual Credit Course Enrollment by Career Cluster, FY 2015-2018
- B-16 Dual Credit Course Enrollment by Instructional Site and by College, FY 2018

APPENDIX C

- C-1 FY 2017 Graduating Dual Credit Students Enrolling in the Same Community College in FY 2018

APPENDIX D

Illinois Community Colleges by Geographic Regions

Chicago: Harold Washington College, Harry S Truman College, Kennedy-King College, Malcolm X College, Olive-Harvey College, Richard J. Daley College, Wilbur Wright College

North: College of DuPage, College of Lake County, Elgin Community College, Harper College, Highland Community College, Kishwaukee College, McHenry County College, Moraine Valley Community College, Morton College, Oakton Community College, Prairie State College, Rock Valley College, Sauk Valley Community College, South Suburban College, Triton College, Waubensee Community College

Central: Black Hawk College, Carl Sandburg College, Danville Area Community College, Heartland Community College, Illinois Central College, Illinois Valley Community College, John Wood Community College, Joliet Junior College, Kankakee Community College, Lincoln Land Community College, Parkland College, Richland Community College, Spoon River College

South: Frontier Community College, John A. Logan College, Kaskaskia College, Lake Land College, Lewis and Clark Community College, Lincoln Trail College, Olney Central College, Rend Lake College, Shawnee Community College, Southeastern Illinois College, Southwestern Illinois College, Wabash Valley College



Illinois Community College Board
Table A-1
DUAL CREDIT HEADCOUNT ENROLLMENT BY COLLEGE
FISCAL YEARS 2014-2018

Dist. No. District/College	FY 2014 Headcount	FY 2015 Headcount	FY 2016 Headcount	FY 2017 Headcount	FY 2018 Headcount	% Change 2014-2018	% Change 2017-2018
503 Black Hawk	1,296	1,372	1,271	1,258	1,172	-9.6%	-6.8%
518 Carl Sandburg	443	454	434	431	583	31.6%	35.3%
508 City Colleges of Chicago	(1,055)	(1,777)	(2,736)	(3,083)	(3,655)	(246.4%)	(18.6%)
02 Harold Washington	109	223	388	508	685	528.4%	34.8%
04 Harry S Truman	214	327	353	269	262	22.4%	-2.6%
01 Kennedy-King	70	133	173	235	290	314.3%	23.4%
03 Malcolm X	92	118	217	303	387	320.7%	27.7%
05 Olive-Harvey	201	186	300	348	376	87.1%	8.0%
06 Richard J. Daley	236	412	628	703	702	197.5%	-0.1%
07 Wilbur Wright	133	378	677	717	953	616.5%	32.9%
502 College of DuPage	3,975	4,874	5,248	5,387	5,084	27.9%	-5.6%
532 College of Lake County	1,267	1,292	1,217	1,366	1,324	4.5%	-3.1%
507 Danville Area	1,429	1,431	1,588	939	913	-36.1%	-2.8%
509 Elgin	896	970	973	289	285	-68.2%	-1.4%
512 Harper	1,956	2,315	3,056	4,017	3,266	67.0%	-18.7%
540 Heartland	348	821	774	865	1,131	225.0%	30.8%
519 Highland	828	799	973	987	891	7.6%	-9.7%
514 Illinois Central	1,645	1,786	1,665	1,854	2,012	22.3%	8.5%
529 Illinois Eastern	(1,411)	(1,360)	(1,334)	(1,466)	(1,352)	(-4.2%)	(-7.8%)
04 Frontier	745	697	621	714	654	-12.2%	-8.4%
01 Lincoln Trail	182	184	203	212	214	17.6%	0.9%
02 Olney Central	236	249	235	242	209	-11.4%	-13.6%
03 Wabash Valley	248	230	275	298	275	10.9%	-7.7%
513 Illinois Valley	556	563	517	975	948	70.5%	-2.8%
530 John A. Logan	1,046	1,011	943	1,072	1,046	0.0%	-2.4%
539 John Wood	222	297	303	307	277	24.8%	-9.8%
525 Joliet Junior	4,865	4,072	3,029	3,855	4,169	-14.3%	8.1%
520 Kankakee	518	465	606	638	701	35.3%	9.9%
501 Kaskaskia	2,809	2,955	2,889	2,817	2,322	-17.3%	-17.6%
523 Kishwaukee	500	494	533	556	600	20.0%	7.9%
517 Lake Land	1,599	1,544	1,508	1,631	1,537	-3.9%	-5.8%
536 Lewis and Clark	4,146	3,915	3,919	4,046	3,938	-5.0%	-2.7%
526 Lincoln Land	1,781	1,852	1,784	1,954	1,933	8.5%	-1.1%
528 McHenry County	798	916	1,337	1,527	1,730	116.8%	13.3%
524 Moraine Valley	2,203	1,436	1,957	2,475	2,447	11.1%	-1.1%
527 Morton	229	135	146	577	310	35.4%	-46.3%
535 Oakton	781	633	750	800	1,212	55.2%	51.5%
505 Parkland	1,004	1,042	1,146	1,068	1,177	17.2%	10.2%
515 Prairie State	540	718	864	552	767	42.0%	38.9%
521 Rend Lake	988	1,041	1,049	1,047	922	-6.7%	-11.9%
537 Richland	825	851	940	885	815	-1.2%	-7.9%
511 Rock Valley	653	649	650	681	643	-1.5%	-5.6%
506 Sauk Valley	812	847	690	758	700	-13.8%	-7.7%
531 Shawnee	508	493	510	558	450	-11.4%	-19.4%
510 South Suburban	712	773	873	817	1,537	115.9%	88.1%
533 Southeastern Illinois	702	587	675	580	858	22.2%	47.9%
522 Southwestern Illinois	2,663	2,848	2,774	2,556	2,942	10.5%	15.1%
534 Spoon River	306	289	295	253	293	-4.2%	15.8%
504 Triton	501	580	735	736	826	64.9%	12.2%
516 Waubensee	<u>1,275</u>	<u>1,461</u>	<u>2,180</u>	<u>2,234</u>	<u>2,271</u>	<u>78.1%</u>	<u>1.7%</u>
TOTALS/AVERAGES	50,091	51,718	54,871	57,897	59,039	17.9%	2.0%

SOURCE OF DATA: ICCB Centralized Data System--Annual Enrollment and Completion (A1) Data



Illinois Community College Board

Table A-2

DUAL CREDIT HEADCOUNT ENROLLMENT VS.
OVERALL CREDIT ENROLLMENT BY COLLEGE
FISCAL YEAR 2018

Dist.	<u>No. District/College</u>	<u>Dual Credit</u>	<u>Total Credit</u>	<u>% Dual Credit</u>
	503 Black Hawk	1,172	8,110	14.5%
	518 Carl Sandburg	583	3,018	19.3%
	508 City Colleges of Chicago	(3,655)	(74,052)	(4.9%)
	02 Harold Washington	685	12,593	5.4%
	04 Harry S Truman	262	13,172	2.0%
	01 Kennedy-King	290	5,381	5.4%
	03 Malcolm X	387	10,347	3.7%
	05 Olive-Harvey	376	4,892	7.7%
	06 Richard J. Daley	702	11,498	6.1%
	07 Wilbur Wright	953	16,169	5.9%
	502 College of DuPage	5,084	43,669	11.6%
	532 College of Lake County	1,324	23,794	5.6%
	507 Danville Area	913	6,124	14.9%
	509 Elgin	285	15,074	1.9%
	512 Harper	3,266	23,618	13.8%
	540 Heartland	1,131	8,954	12.6%
	519 Highland	891	3,568	25.0%
	514 Illinois Central	2,012	12,989	15.5%
	529 Illinois Eastern	(1,352)	(26,135)	(5.2%)
	04 Frontier	654	7,094	9.2%
	01 Lincoln Trail	214	1,599	13.4%
	02 Olney Central	209	2,016	10.4%
	03 Wabash Valley	275	15,426	1.8%
	513 Illinois Valley	948	4,898	19.4%
	530 John A. Logan	1,046	13,682	7.6%
	539 John Wood	277	2,838	9.8%
	525 Joliet Junior	4,169	23,177	18.0%
	520 Kankakee	701	6,689	10.5%
	501 Kaskaskia	2,322	5,647	41.1%
	523 Kishwaukee	600	5,116	11.7%
	517 Lake Land	1,537	14,957	10.3%
	536 Lewis and Clark	3,938	9,602	41.0%
	526 Lincoln Land	1,933	11,135	17.4%
	528 McHenry County	1,730	10,668	16.2%
	524 Moraine Valley	2,447	23,362	10.5%
	527 Morton	310	6,254	5.0%
	535 Oakton	1,212	18,251	6.6%
	505 Parkland	1,177	12,238	9.6%
	515 Prairie State	767	8,719	8.8%
	521 Rend Lake	922	4,908	18.8%
	537 Richland	815	4,159	19.6%
	511 Rock Valley	643	10,387	6.2%
	506 Sauk Valley	700	2,830	24.7%
	531 Shawnee	450	4,209	10.7%
	510 South Suburban	1,537	9,136	16.8%
	533 Southeastern Illinois	858	3,912	21.9%
	522 Southwestern Illinois	2,942	16,187	18.2%
	534 Spoon River	293	2,315	12.7%
	504 Triton	826	17,777	4.6%
	516 Waubensee	<u>2,271</u>	<u>17,229</u>	<u>13.2%</u>
	TOTALS	59,039	519,387	11.4%

SOURCE OF DATA: ICCB Centralized Data System--Annual Enrollment and Completion (A1) Data



Illinois Community College Board

Table A-3

DUAL CREDIT HEADCOUNT ENROLLMENT BY GENDER AND BY COLLEGE
FISCAL YEAR 2018

Dist.	<u>No. District/College</u>	<u>Male</u>	<u>Female</u>	<u>Total</u>
	503 Black Hawk	531	641	1,172
	518 Carl Sandburg	233	350	583
	508 City Colleges of Chicago	(1,624)	(2,031)	(3,655)
	02 Harold Washington	272	413	685
	04 Harry S Truman	136	126	262
	01 Kennedy-King	121	169	290
	03 Malcolm X	162	225	387
	05 Olive-Harvey	143	233	376
	06 Richard J. Daley	309	393	702
	07 Wilbur Wright	481	472	953
	502 College of DuPage	2,430	2,654	5,084
	532 College of Lake County	686	638	1,324
	507 Danville Area	447	466	913
	509 Elgin	156	129	285
	512 Harper	1,515	1,751	3,266
	540 Heartland	476	655	1,131
	519 Highland	432	459	891
	514 Illinois Central	849	1,163	2,012
	529 Illinois Eastern	(638)	(714)	(1,352)
	04 Frontier	290	364	654
	01 Lincoln Trail	104	110	214
	02 Olney Central	99	110	209
	03 Wabash Valley	145	130	275
	513 Illinois Valley	411	537	948
	530 John A. Logan	360	686	1,046
	539 John Wood	121	156	277
	525 Joliet Junior	2,004	2,165	4,169
	520 Kankakee	329	372	701
	501 Kaskaskia	1,103	1,219	2,322
	523 Kishwaukee	291	309	600
	517 Lake Land	752	785	1,537
	536 Lewis and Clark	2,010	1,928	3,938
	526 Lincoln Land	889	1,044	1,933
	528 McHenry County	862	868	1,730
	524 Moraine Valley	1,597	850	2,447
	527 Morton	176	134	310
	535 Oakton	542	670	1,212
	505 Parkland	542	635	1,177
	515 Prairie State	454	313	767
	521 Rend Lake	434	488	922
	537 Richland	323	492	815
	511 Rock Valley	252	391	643
	506 Sauk Valley	302	398	700
	531 Shawnee	196	254	450
	510 South Suburban	741	796	1,537
	533 Southeastern Illinois	439	419	858
	522 Southwestern Illinois	1,587	1,355	2,942
	534 Spoon River	102	191	293
	504 Triton	426	400	826
	516 Waubonsee	<u>1,082</u>	<u>1,189</u>	<u>2,271</u>
	TOTALS	28,344	30,695	59,039

SOURCE OF DATA: ICCB Centralized Data System--Annual Enrollment and Completion (A1) Data



Illinois Community College Board
Table A-4
DUAL CREDIT HEADCOUNT ENROLLMENT BY ETHNIC ORIGIN AND BY COLLEGE
FISCAL YEAR 2018

Dist. No. District/College	Asian	Native American	African American Non-Latino	Latino	White Non-Latino	Non- Resident Alien	Pacific Islander	Two or More Races	All Other or No Indication	Total
503 Black Hawk	23	4	43	121	927	0	1	42	11	1,172
518 Carl Sandburg	2	4	8	32	493	0	0	28	16	583
508 City Colleges of Chicago	(143)	(3)	(1,289)	(1,700)	(283)	(22)	(2)	(131)	(82)	(3,655)
02 Harold Washington	9	2	482	87	9	3	0	31	62	685
04 Harry S Truman	40	0	57	116	29	6	0	14	0	262
01 Kennedy-King	0	0	191	77	3	0	0	14	5	290
03 Malcolm X	3	1	104	254	1	1	0	9	14	387
05 Olive-Harvey	0	0	286	70	2	2	0	16	0	376
06 Richard J. Daley	18	0	116	505	54	0	0	9	0	702
07 Wilbur Wright	73	0	53	591	185	10	2	38	1	953
502 College of DuPage	559	29	333	1,073	2,772	5	0	46	267	5,084
532 College of Lake County	40	0	80	424	665	6	3	68	38	1,324
507 Danville Area	15	2	70	47	692	0	0	20	67	913
509 Elgin	6	2	6	115	138	0	0	7	11	285
512 Harper	516	12	112	818	1,476	0	0	107	225	3,266
540 Heartland	14	3	31	61	941	1	1	67	12	1,131
519 Highland	7	2	44	46	735	0	0	40	17	891
514 Illinois Central	52	4	153	86	1,620	8	2	87	0	2,012
529 Illinois Eastern	(3)	(2)	(6)	(24)	(1,285)	(0)	(0)	(32)	(0)	(1,352)
04 Frontier	3	2	3	8	628	0	0	10	0	654
01 Lincoln Trail	0	0	2	7	192	0	0	13	0	214
02 Olney Central	0	0	0	7	198	0	0	4	0	209
03 Wabash Valley	0	0	1	2	267	0	0	5	0	275
513 Illinois Valley	9	2	7	103	798	0	2	10	17	948
530 John A. Logan	10	0	40	20	803	0	0	1	172	1,046
539 John Wood	4	0	3	0	263	0	0	2	5	277
525 Joliet Junior	104	3	328	891	2,629	5	0	166	43	4,169
520 Kankakee	7	2	52	118	468	0	0	43	11	701
501 Kaskaskia	30	10	33	45	2,103	1	1	93	6	2,322
523 Kishwaukee	8	3	25	117	416	0	0	17	14	600
517 Lake Land	9	4	10	21	1,413	0	0	53	27	1,537
536 Lewis and Clark	41	26	206	62	2,767	0	6	9	821	3,938
526 Lincoln Land	29	17	101	79	1,349	0	0	108	250	1,933
528 McHenry County	37	1	14	327	1,137	1	1	79	133	1,730
524 Moraine Valley	76	11	340	614	1,227	0	3	89	87	2,447
527 Morton	1	0	6	257	19	0	1	2	24	310
535 Oakton	268	2	33	134	711	11	0	26	27	1,212
505 Parkland	25	4	46	65	719	5	0	41	272	1,177
515 Prairie State	6	0	427	106	186	8	0	6	28	767
521 Rend Lake	8	3	21	14	864	1	2	7	2	922
537 Richland	7	2	67	19	666	0	0	7	47	815
511 Rock Valley	16	0	19	100	478	0	0	15	15	643
506 Sauk Valley	6	1	7	85	573	0	0	16	12	700
531 Shawnee	5	5	22	29	385	0	0	0	4	450
510 South Suburban	30	13	647	367	407	0	2	31	40	1,537
533 Southeastern Illinois	5	2	9	15	786	0	0	27	14	858
522 Southwestern Illinois	41	7	417	155	1,993	21	2	203	103	2,942
534 Spoon River	2	1	1	5	274	0	0	3	7	293
504 Triton	39	0	91	317	324	2	0	32	21	826
516 Waubonsee	<u>110</u>	<u>5</u>	<u>110</u>	<u>546</u>	<u>1,368</u>	<u>3</u>	<u>4</u>	<u>57</u>	<u>68</u>	<u>2,271</u>
TOTALS	2,313	191	5,257	9,158	37,153	100	33	1,818	3,016	59,039

SOURCE OF DATA: ICCB Centralized Data System--Annual Enrollment and Completion (A1) Data



Illinois Community College Board
Table A-5
DUAL CREDIT HEADCOUNT ENROLLMENT
BY NUMBER OF ENROLLED HOURS AND BY COLLEGE
FISCAL YEAR 2018

Dist.	No. District/College	>0-3.99	4-6.99	7-9.99	10-12.99	13 or More	Total
	503 Black Hawk	294	366	212	122	178	1,172
	518 Carl Sandburg	91	177	110	87	118	583
	508 City Colleges of Chicago	(768)	(1,857)	(473)	(365)	(192)	(3,655)
	02 Harold Washington	120	365	58	78	64	685
	04 Harry S Truman	123	80	13	36	10	262
	01 Kennedy-King	137	123	5	17	8	290
	03 Malcolm X	47	201	95	27	17	387
	05 Olive-Harvey	53	171	65	50	37	376
	06 Richard J. Daley	103	330	131	93	45	702
	07 Wilbur Wright	185	587	106	64	11	953
	502 College of DuPage	3,193	1,234	438	81	138	5,084
	532 College of Lake County	526	466	211	94	27	1,324
	507 Danville Area	117	341	173	84	198	913
	509 Elgin	122	36	51	35	41	285
	512 Harper	1,272	1,319	431	150	94	3,266
	540 Heartland	275	392	250	145	69	1,131
	519 Highland	391	253	146	83	18	891
	514 Illinois Central	589	566	439	218	200	2,012
	529 Illinois Eastern	(249)	(249)	(208)	(190)	(456)	(1,352)
	04 Frontier	130	84	82	77	281	654
	01 Lincoln Trail	12	54	44	42	62	214
	02 Olney Central	25	43	36	43	62	209
	03 Wabash Valley	82	68	46	28	51	275
	513 Illinois Valley	414	311	113	53	57	948
	530 John A. Logan	788	193	65	0	0	1,046
	539 John Wood	35	151	35	45	11	277
	525 Joliet Junior	1,817	1,704	418	144	86	4,169
	520 Kankakee	307	222	154	12	6	701
	501 Kaskaskia	876	705	359	159	223	2,322
	523 Kishwaukee	212	182	142	21	43	600
	517 Lake Land	339	491	222	213	272	1,537
	536 Lewis and Clark	1,367	980	620	295	676	3,938
	526 Lincoln Land	766	653	295	132	87	1,933
	528 McHenry County	866	254	422	108	80	1,730
	524 Moraine Valley	1,712	486	212	34	3	2,447
	527 Morton	188	118	4	0	0	310
	535 Oakton	687	296	189	33	7	1,212
	505 Parkland	209	496	170	160	142	1,177
	515 Prairie State	575	186	4	2	0	767
	521 Rend Lake	202	240	130	87	263	922
	537 Richland	269	302	89	95	60	815
	511 Rock Valley	169	77	45	65	287	643
	506 Sauk Valley	181	178	142	117	82	700
	531 Shawnee	96	137	89	37	91	450
	510 South Suburban	1,255	262	19	1	0	1,537
	533 Southeastern Illinois	435	184	94	49	96	858
	522 Southwestern Illinois	1,239	981	237	133	352	2,942
	534 Spoon River	89	75	62	34	33	293
	504 Triton	364	266	130	43	23	826
	516 Waubensee	<u>1,103</u>	<u>658</u>	<u>312</u>	<u>101</u>	<u>97</u>	<u>2,271</u>
	TOTALS	24,447	18,044	7,915	3,827	4,806	59,039

SOURCE OF DATA: ICCB Centralized Data System--Annual Enrollment and Completion (A1) Data



Illinois Community College Board
Table B-1
DUAL CREDIT COURSE COUNT BY COLLEGE
FOR FISCAL YEARS 2015-2018

Dist. No. District/College	2015	2016	2017	2018	FY 2016-2018	FY 2017-2018		FY 2015-2018	
					3-Year Average Number	1-Year Difference Number	Percent	4-Year Difference Number	Percent
503 Black Hawk	333	311	311	359	327	48	15.4%	26	7.8%
518 Carl Sandburg	201	178	201	256	212	55	27.4%	55	27.4%
508 City Colleges of Chicago	(426)	(599)	(482)	(575)	(552)	(93)	(19.3%)	(149)	(35.0%)
02 Harold Washington	118	119	46	125	97	79	171.7%	7	5.9%
04 Harry S Truman	60	118	69	52	80	-17	-24.6%	-8	-13.3%
01 Kennedy-King	27	46	29	69	48	40	137.9%	42	155.6%
03 Malcolm X	43	55	53	80	63	27	50.9%	37	86.0%
05 Olive-Harvey	27	45	52	67	55	15	28.8%	40	148.1%
06 Richard J. Daley	62	138	160	105	134	-55	-34.4%	43	69.4%
07 Wilbur Wright	89	78	73	77	76	4	5.5%	-12	-13.5%
502 College of DuPage	481	434	459	431	441	-28	-6.1%	-50	-10.4%
532 College of Lake County	139	151	154	173	159	19	12.3%	34	24.5%
507 Danville Area	522	576	631	618	608	-13	-2.1%	96	18.4%
509 Elgin	83	80	69	310	153	241	349.3%	227	273.5%
512 Harper	189	296	369	342	336	-27	-7.3%	153	81.0%
540 Heartland	184	184	175	238	199	63	36.0%	54	29.3%
519 Highland	131	160	163	130	151	-33	-20.2%	-1	-0.8%
514 Illinois Central	231	224	253	268	248	15	5.9%	37	16.0%
529 Illinois Eastern	(406)	(354)	(500)	(445)	(433)	(-55)	(-11.0%)	(39)	(9.6%)
04 Frontier	206	159	250	215	208	-35	-14.0%	9	4.4%
01 Lincoln Trail	45	47	54	67	56	13	24.1%	22	48.9%
02 Olney Central	59	57	66	56	60	-10	-15.2%	-3	-5.1%
03 Wabash Valley	96	91	130	107	109	-23	-17.7%	11	11.5%
513 Illinois Valley	199	190	157	160	169	3	1.9%	-39	-19.6%
530 John A. Logan	111	121	116	134	124	18	15.5%	23	20.7%
539 John Wood	94	87	91	79	86	-12	-13.2%	-15	-16.0%
525 Joliet Junior	471	307	368	400	358	32	8.7%	-71	-15.1%
520 Kankakee	48	54	72	51	59	-21	-29.2%	3	6.3%
501 Kaskaskia	529	517	440	365	441	-75	-17.0%	-164	-31.0%
523 Kishwaukee	60	61	80	54	65	-26	-32.5%	-6	-10.0%
517 Lake Land	316	331	372	388	364	16	4.3%	72	22.8%
536 Lewis and Clark	578	542	554	529	542	-25	-4.5%	-49	-8.5%
526 Lincoln Land	238	245	248	233	242	-15	-6.0%	-5	-2.1%
528 McHenry County	101	103	113	127	114	14	12.4%	26	25.7%
524 Moraine Valley	137	143	171	174	163	3	1.8%	37	27.0%
527 Morton	17	15	48	26	30	-22	-45.8%	9	52.9%
535 Oakton	53	57	71	84	71	13	18.3%	31	58.5%
505 Parkland	336	336	312	284	311	-28	-9.0%	-52	-15.5%
515 Prairie State	80	75	45	57	59	12	26.7%	-23	-28.8%
521 Rend Lake	191	267	274	268	270	-6	-2.2%	77	40.3%
537 Richland	226	289	269	222	260	-47	-17.5%	-4	-1.8%
511 Rock Valley	727	896	872	777	848	-95	-10.9%	50	6.9%
506 Sauk Valley	338	328	335	346	336	11	3.3%	8	2.4%
531 Shawnee	54	59	64	64	62	0	0.0%	10	18.5%
510 South Suburban	122	156	159	173	163	14	8.8%	51	41.8%
533 Southeastern Illinois	255	263	231	211	235	-20	-8.7%	-44	-17.3%
522 Southwestern Illinois	769	995	963	1,109	1,022	146	15.2%	340	44.2%
534 Spoon River	87	124	132	139	132	7	5.3%	52	59.8%
504 Triton	113	142	169	192	168	23	13.6%	79	69.9%
516 Waubonsee	<u>410</u>	<u>490</u>	<u>501</u>	<u>479</u>	<u>490</u>	<u>-22</u>	<u>-4.4%</u>	<u>69</u>	<u>16.8%</u>
TOTALS	9,986	10,740	10,994	11,270	11,001	276	2.5%	1,284	12.9%
Pure									
Minimum	17	15	29	26	30	-95	-45.8%	-164	-31.0%
Maximum	769	995	963	1,109	1,022	241	349.3%	340	273.5%
Median	134	154	162	174	163	3	1.8%	23	16.4%
Standard Deviation	187	208	207	208	206	52	61.6%	74	53.8%
Average	208	224	229	235	229	6	13.7%	27	27.4%

SOURCE OF DATA: ICCB Centralized Data System--Annual Course (AC) Data



Illinois Community College Board
Table B-2
DUAL CREDIT COURSE ENROLLMENT BY COLLEGE
FOR FISCAL YEARS 2015-2018

Dist. No. District/College	FY 2016-2018 3-Year Average				FY 2017-2018 1-Year Difference		FY 2015-2018 4-Year Difference		
	2015	2016	2017	2018	Number	Percent	Number	Percent	
503 Black Hawk	3,689	3,243	3,228	3,094	3,188	-134	-4.2%	-595	-16.1%
518 Carl Sandburg	1,408	1,428	1,553	1,939	1,640	386	24.9%	531	37.7%
508 City Colleges of Chicago	(2,623)	(4,603)	(3,199)	(6,562)	(4,788)	(3,363)	(105.1%)	(3,939)	(150.2%)
02 Harold Washington	468	792	92	1,519	801	1,427	1551.1%	1,051	224.6%
04 Harry S Truman	521	655	283	375	438	92	32.5%	-146	-28.0%
01 Kennedy-King	144	334	221	487	347	266	120.4%	343	238.2%
03 Malcolm X	176	396	389	656	480	267	68.6%	480	272.7%
05 Olive-Harvey	281	415	549	913	626	364	66.3%	632	224.9%
06 Richard J. Daley	513	1,094	1,057	1,305	1,152	248	23.5%	792	154.4%
07 Wilbur Wright	520	917	608	1,307	944	699	115.0%	787	151.3%
502 College of DuPage	7,628	8,039	8,269	7,551	7,953	-718	-8.7%	-77	-1.0%
532 College of Lake County	1,937	1,775	1,968	2,026	1,923	58	2.9%	89	4.6%
507 Danville Area	1,896	2,306	2,512	2,526	2,448	14	0.6%	630	33.2%
509 Elgin	374	365	262	1,585	737	1,323	505.0%	1,211	323.8%
512 Harper	3,098	4,097	5,490	4,580	4,722	-910	-16.6%	1,482	47.8%
540 Heartland	1,697	1,523	1,614	2,242	1,793	628	38.9%	545	32.1%
519 Highland	1,306	1,740	1,731	1,539	1,670	-192	-11.1%	233	17.8%
514 Illinois Central	3,924	3,786	4,626	6,346	4,919	1,720	37.2%	2,422	61.7%
529 Illinois Eastern	(4,314)	(4,255)	(4,876)	(4,584)	(4,572)	(-292)	(-6.0%)	(270)	(6.3%)
04 Frontier	2,455	2,138	2,595	2,504	2,412	-91	-3.5%	49	2.0%
01 Lincoln Trail	417	538	528	628	565	100	18.9%	211	50.6%
02 Olney Central	823	783	766	683	744	-83	-10.8%	-140	-17.0%
03 Wabash Valley	619	796	987	769	851	-218	-22.1%	150	24.2%
513 Illinois Valley	1,452	1,327	1,705	1,851	1,628	146	8.6%	399	27.5%
530 John A. Logan	1,419	1,953	1,996	2,118	2,022	122	6.1%	699	49.3%
539 John Wood	592	574	597	590	587	-7	-1.2%	-2	-0.3%
525 Joliet Junior	6,997	4,730	6,183	6,803	5,905	620	10.0%	-194	-2.8%
520 Kankakee	644	909	916	941	922	25	2.7%	297	46.1%
501 Kaskaskia	7,129	7,151	6,717	5,087	6,318	-1,630	-24.3%	-2,042	-28.6%
523 Kishwaukee	719	795	849	585	743	-264	-31.1%	-134	-18.6%
517 Lake Land	3,599	3,584	3,958	3,808	3,783	-150	-3.8%	209	5.8%
536 Lewis and Clark	9,006	8,894	9,103	8,909	8,969	-194	-2.1%	-97	-1.1%
526 Lincoln Land	3,224	3,015	3,500	3,368	3,294	-132	-3.8%	144	4.5%
528 McHenry County	1,520	2,026	2,300	2,373	2,233	73	3.2%	853	56.1%
524 Moraine Valley	2,207	2,632	3,356	3,192	3,060	-164	-4.9%	985	44.6%
527 Morton	201	227	623	337	396	-286	-45.9%	136	67.7%
535 Oakton	796	903	1,025	1,518	1,149	493	48.1%	722	90.7%
505 Parkland	2,150	2,376	2,345	2,277	2,333	-68	-2.9%	127	5.9%
515 Prairie State	1,036	1,165	647	897	903	250	38.6%	-139	-13.4%
521 Rend Lake	2,845	3,040	3,377	2,798	3,072	-579	-17.1%	-47	-1.7%
537 Richland	1,647	2,102	1,876	1,741	1,906	-135	-7.2%	94	5.7%
511 Rock Valley	3,038	3,496	3,380	3,367	3,414	-13	-0.4%	329	10.8%
506 Sauk Valley	2,140	1,649	1,887	1,787	1,774	-100	-5.3%	-353	-16.5%
531 Shawnee	870	913	870	966	916	96	11.0%	96	11.0%
510 South Suburban	960	1,157	1,188	2,167	1,504	979	82.4%	1,207	125.7%
533 Southeastern Illinois	1,575	1,789	1,502	1,497	1,596	-5	-0.3%	-78	-5.0%
522 Southwestern Illinois	5,589	5,852	6,221	7,793	6,622	1,572	25.3%	2,204	39.4%
534 Spoon River	351	692	626	724	681	98	15.7%	373	106.3%
504 Triton	867	1,169	1,254	1,380	1,268	126	10.0%	513	59.2%
516 Waubonsee	<u>2,876</u>	<u>4,081</u>	<u>4,314</u>	<u>4,224</u>	<u>4,206</u>	<u>-90</u>	<u>-2.1%</u>	<u>1,348</u>	<u>46.9%</u>
TOTALS	99,343	105,361	111,643	117,672	111,559	6,029	5.4%	18,329	18.5%
Pure									
Minimum	144	227	92	337	347	-1,630	-45.9%	-2,042	-28.6%
Maximum	9,006	8,894	9,103	8,909	8,969	1,720	1551.1%	2,422	323.8%
Median	1,436	1,586	1,660	1,819	1,655	42	2.8%	265	29.8%
Standard Deviation	2,094	2,001	2,164	2,083	2,057	589	234.1%	703	82.8%
Average	2,070	2,195	2,326	2,452	2,324	126	55.0%	382	53.2%

SOURCE OF DATA: ICCB Centralized Data System--Annual Course (AC) Data



Illinois Community College Board
Table B-3
AVERAGE DUAL CREDIT CLASS SIZE BY COLLEGE
FOR FISCAL YEARS 2015-2018

Dist. No. District/College	2015	2016	2017	2018	FY 2016-2018 3-Year Average		FY 2017-2018 1-Year Difference		FY 2015-2018 4-Year Difference	
					Number	Percent	Number	Percent	Number	Percent
503 Black Hawk	11.1	10.4	10.4	8.6	9.8	-1.8	-17.0%	-2.5	-22.2%	
518 Carl Sandburg	7.0	8.0	7.7	7.6	7.8	-0.2	-2.0%	0.6	8.1%	
508 City Colleges of Chicago	(6.2)	(7.7)	(6.6)	(11.4)	(8.6)	(4.8)	(71.9%)	(5.3)	(85.3%)	
02 Harold Washington	4.0	6.7	2.0	12.2	6.9	10.2	507.6%	8.2	206.4%	
04 Harry S Truman	8.7	5.6	4.1	7.2	5.6	3.1	75.8%	-1.5	-16.9%	
01 Kennedy-King	5.3	7.3	7.6	7.1	7.3	-0.6	-7.4%	1.7	32.3%	
03 Malcolm X	4.1	7.2	7.3	8.2	7.6	0.9	11.7%	4.1	100.3%	
05 Olive-Harvey	10.4	9.2	10.6	13.6	11.1	3.1	29.1%	3.2	30.9%	
06 Richard J. Daley	8.3	7.9	6.6	12.4	9.0	5.8	88.1%	4.2	50.2%	
07 Wilbur Wright	5.8	11.8	8.3	17.0	12.4	8.6	103.8%	11.1	190.5%	
502 College of DuPage	15.9	18.5	18.0	17.5	18.0	-0.5	-2.8%	1.7	10.5%	
532 College of Lake County	13.9	11.8	12.8	11.7	12.1	-1.1	-8.4%	-2.2	-16.0%	
507 Danville Area	3.6	4.0	4.0	4.1	4.0	0.1	2.7%	0.5	12.5%	
509 Elgin	4.5	4.6	3.8	5.1	4.5	1.3	34.7%	0.6	13.5%	
512 Harper	16.4	13.8	14.9	13.4	14.0	-1.5	-10.0%	-3.0	-18.3%	
540 Heartland	9.2	8.3	9.2	9.4	9.0	0.2	2.1%	0.2	2.1%	
519 Highland	10.0	10.9	10.6	11.8	11.1	1.2	11.5%	1.9	18.7%	
514 Illinois Central	17.0	16.9	18.3	23.7	19.6	5.4	29.5%	6.7	39.4%	
529 Illinois Eastern	(10.6)	(12.0)	(9.8)	(10.3)	(10.7)	(0.5)	(5.6%)	(-0.3)	(-3.1%)	
04 Frontier	11.9	13.4	10.4	11.6	11.8	1.3	12.2%	-0.3	-2.3%	
01 Lincoln Trail	9.3	11.4	9.8	9.4	10.2	-0.4	-4.1%	0.1	1.1%	
02 Olney Central	13.9	13.7	11.6	12.2	12.5	0.6	5.1%	-1.8	-12.6%	
03 Wabash Valley	6.4	8.7	7.6	7.2	7.8	-0.4	-5.3%	0.7	11.5%	
513 Illinois Valley	7.3	7.0	10.9	11.6	9.8	0.7	6.5%	4.3	58.6%	
530 John A. Logan	12.8	16.1	17.2	15.8	16.4	-1.4	-8.1%	3.0	23.6%	
539 John Wood	6.3	6.6	6.6	7.5	6.9	0.9	13.8%	1.2	18.6%	
525 Joliet Junior	14.9	15.4	16.8	17.0	16.4	0.2	1.2%	2.2	14.5%	
520 Kankakee	13.4	16.8	12.7	18.5	16.0	5.7	45.0%	5.0	37.5%	
501 Kaskaskia	13.5	13.8	15.3	13.9	14.3	-1.3	-8.7%	0.5	3.4%	
523 Kishwaukee	12.0	13.0	10.6	10.8	11.5	0.2	2.1%	-1.2	-9.6%	
517 Lake Land	11.4	10.8	10.6	9.8	10.4	-0.8	-7.8%	-1.6	-13.8%	
536 Lewis and Clark	15.6	16.4	16.4	16.8	16.6	0.4	2.5%	1.3	8.1%	
526 Lincoln Land	13.5	12.3	14.1	14.5	13.6	0.3	2.4%	0.9	6.7%	
528 McHenry County	15.0	19.7	20.4	18.7	19.6	-1.7	-8.2%	3.6	24.2%	
524 Moraine Valley	16.1	18.4	19.6	18.3	18.8	-1.3	-6.5%	2.2	13.9%	
527 Morton	11.8	15.1	13.0	13.0	13.7	0.0	-0.1%	1.1	9.6%	
535 Oakton	15.0	15.8	14.4	18.1	16.1	3.6	25.2%	3.1	20.3%	
505 Parkland	6.4	7.1	7.5	8.0	7.5	0.5	6.7%	1.6	25.3%	
515 Prairie State	13.0	15.5	14.4	15.7	15.2	1.4	9.5%	2.8	21.5%	
521 Rend Lake	14.9	11.4	12.3	10.4	11.4	-1.9	-15.3%	-4.5	-29.9%	
537 Richland	7.3	7.3	7.0	7.8	7.4	0.9	12.5%	0.6	7.6%	
511 Rock Valley	4.2	3.9	3.9	4.3	4.0	0.5	11.8%	0.2	3.7%	
506 Sauk Valley	6.3	5.0	5.6	5.2	5.3	-0.5	-8.3%	-1.2	-18.4%	
531 Shawnee	16.1	15.5	13.6	15.1	14.7	1.5	11.0%	-1.0	-6.3%	
510 South Suburban	7.9	7.4	7.5	12.5	9.1	5.1	67.6%	4.7	59.2%	
533 Southeastern Illinois	6.2	6.8	6.5	7.1	6.8	0.6	9.1%	0.9	14.9%	
522 Southwestern Illinois	7.3	5.9	6.5	7.0	6.5	0.6	8.8%	-0.2	-3.3%	
534 Spoon River	4.0	5.6	4.7	5.2	5.2	0.5	9.8%	1.2	29.1%	
504 Triton	7.7	8.2	7.4	7.2	7.6	-0.2	-3.1%	-0.5	-6.3%	
516 Waubonsee	<u>7.0</u>	<u>8.3</u>	<u>8.6</u>	<u>8.8</u>	<u>8.6</u>	<u>0.2</u>	<u>2.4%</u>	<u>1.8</u>	<u>25.7%</u>	
TOTALS/AVERAGES	9.9	9.8	10.2	10.4	10.1	0.3	2.8%	0.5	5.0%	
Pure										
Minimum	3.6	3.9	2.0	4.1	4.0	-1.9	-17.0%	-4.5	-29.9%	
Maximum	17.0	19.7	20.4	23.7	19.6	10.2	507.6%	11.1	206.4%	
Median	9.6	10.6	10.4	11.6	10.3	0.4	3.9%	1.0	12.0%	
Standard Deviation	4.1	4.4	4.6	4.6	4.3	2.6	76.1%	2.8	44.5%	
Average	10.1	10.7	10.4	11.5	10.9	1.0	21.6%	1.4	20.4%	

SOURCE OF DATA: ICCB Centralized Data System--Annual Course (AC) Data



Illinois Community College Board
 Table B-4
 TOP TEN DUAL CREDIT COURSE ENROLLMENTS BY CIP (BASED ON FISCAL YEAR 2018)
 FOR FISCAL YEARS 2015-2018

CIP	COURSE NAME	2015	2016	2017	2018	FY 2016-2018	FY 2017-2018	FY 2015-2018		
						3-Year Average	1-Year Difference	4-Year Difference		
						Number	Percent	Number	Percent	
23.1301	Writing, General	15,575 *	16,671	17,278	19,082	17,677	1,804	10.4%	3,507	22.5%
27.0101	Mathematics, General	5,478	6,454	6,674	6,545	6,558	-129	-1.9%	1,067	19.5%
16.0905	Spanish Language and Literature	4,708	4,975	5,157	5,046	5,059	-111	-2.2%	338	7.2%
54.0102	American History (United States)	2,952	3,409	3,860	4,386	3,885	526	13.6%	1,434	48.6%
23.1304	Rhetoric and Composition	3,541 **	3,710	3,967	4,078	3,918	111	2.8%	537	15.2%
42.0101	Psychology, General	3,851	3,047	3,404	3,676	3,376	272	8.0%	-175	-4.5%
48.0508	Welding Technology/Welder	2,728	2,777	2,959	2,833	2,856	-126	-4.3%	105	3.8%
51.3902	Nursing Assistant/Aide and Patient Care Assistant/Aide	2,259	2,301	2,678	2,697	2,559	19	0.7%	438	19.4%
26.0101	Biology/Biological Sciences, General	1,764	2,549	2,656	2,650	2,618	-6	-0.2%	886	50.2%
27.0501	Statistics, General	<u>1,407</u>	<u>1,724</u>	<u>1,967</u>	<u>2,449</u>	<u>2,047</u>	<u>482</u>	<u>24.5%</u>	<u>1,042</u>	<u>74.1%</u>
	Totals	44,263	47,617	50,600	53,442	50,553	2,842	5.6%	9,179	20.7%
	Grand Total	99,343	105,361	111,643	117,672	111,559	6,029	5.4%	18,329	18.5%
	Percent Top Ten of Grand Total	44.6%	45.2%	45.3%	45.4%	45.3%	0.1%	0.2%	0.9%	1.9%

*includes 23.0401 English Composition and 23.1301 Writing General

**includes 23.1001 Speech and Rhetorical Studies and 23.1304 Rhetoric and Composition

SOURCE OF DATA: ICCB Centralized Data System--Annual Course (AC) Data



Illinois Community College Board
Table B-5
DUAL CREDIT COURSE COUNT BY COLLEGE
IN TRANSFER EDUCATION
FOR FISCAL YEARS 2015-2018

Dist. No. District/College	FY 2016-2018 3-Year Average				FY 2017-2018 1-Year Difference		FY 2015-2018 4-Year Difference		
	2015	2016	2017	2018	Number	Percent	Number	Percent	
503 Black Hawk	215	189	188	239	205	51	27.1%	24	11.2%
518 Carl Sandburg	161	133	153	205	164	52	34.0%	44	27.3%
508 City Colleges of Chicago	(370)	(518)	(413)	(463)	(465)	(50)	(12.1%)	(93)	(25.1%)
02 Harold Washington	104	105	43	94	81	51	118.6%	-10	-9.6%
04 Harry S Truman	49	103	61	42	69	-19	-31.1%	-7	-14.3%
01 Kennedy-King	26	39	27	54	40	27	100.0%	28	107.7%
03 Malcolm X	34	45	49	65	53	16	32.7%	31	91.2%
05 Olive-Harvey	27	41	46	54	47	8	17.4%	27	100.0%
06 Richard J. Daley	56	123	127	88	113	-39	-30.7%	32	57.1%
07 Wilbur Wright	74	62	60	66	63	6	10.0%	-8	-10.8%
502 College of DuPage	142	131	141	115	129	-26	-18.4%	-27	-19.0%
532 College of Lake County	45	52	64	59	58	-5	-7.8%	14	31.1%
507 Danville Area	214	279	312	312	301	0	0.0%	98	45.8%
509 Elgin	14	15	13	244	91	231	1776.9%	230	1642.9%
512 Harper	60	131	161	127	140	-34	-21.1%	67	111.7%
540 Heartland	142	127	122	175	141	53	43.4%	33	23.2%
519 Highland	34	56	58	46	53	-12	-20.7%	12	35.3%
514 Illinois Central	181	172	176	169	172	-7	-4.0%	-12	-6.6%
529 Illinois Eastern	(277)	(228)	(299)	(247)	(258)	(-52)	(-17.4%)	(-30)	(-10.8%)
04 Frontier	148	110	151	119	127	-32	-21.2%	-29	-19.6%
01 Lincoln Trail	33	32	37	50	40	13	35.1%	17	51.5%
02 Olney Central	43	41	47	32	40	-15	-31.9%	-11	-25.6%
03 Wabash Valley	53	45	64	46	52	-18	-28.1%	-7	-13.2%
513 Illinois Valley	156	155	84	98	112	14	16.7%	-58	-37.2%
530 John A. Logan	68	78	78	76	77	-2	-2.6%	8	11.8%
539 John Wood	80	73	71	65	70	-6	-8.5%	-15	-18.8%
525 Joliet Junior	298	216	210	219	215	9	4.3%	-79	-26.5%
520 Kankakee	30	38	48	27	38	-21	-43.8%	-3	-10.0%
501 Kaskaskia	261	259	229	156	215	-73	-31.9%	-105	-40.2%
523 Kishwaukee	13	17	21	6	15	-15	-71.4%	-7	-53.8%
517 Lake Land	153	162	171	161	165	-10	-5.8%	8	5.2%
536 Lewis and Clark	296	278	303	300	294	-3	-1.0%	4	1.4%
526 Lincoln Land	135	137	148	144	143	-4	-2.7%	9	6.7%
528 McHenry County	55	67	58	70	65	12	20.7%	15	27.3%
524 Moraine Valley	18	17	21	14	17	-7	-33.3%	-4	-22.2%
527 Morton	0	6	19	18	14	-1	-5.3%	18	--
535 Oakton	23	23	27	38	29	11	40.7%	15	65.2%
505 Parkland	244	235	223	219	226	-4	-1.8%	-25	-10.2%
515 Prairie State	3	4	0	0	1	0	--	-3	-100.0%
521 Rend Lake	144	180	188	163	177	-25	-13.3%	19	13.2%
537 Richland	149	176	172	133	160	-39	-22.7%	-16	-10.7%
511 Rock Valley	667	805	807	713	775	-94	-11.6%	46	6.9%
506 Sauk Valley	253	232	239	234	235	-5	-2.1%	-19	-7.5%
531 Shawnee	37	41	44	38	41	-6	-13.6%	1	2.7%
510 South Suburban	19	58	71	25	51	-46	-64.8%	6	31.6%
533 Southeastern Illinois	141	149	143	119	137	-24	-16.8%	-22	-15.6%
522 Southwestern Illinois	551	771	751	879	800	128	17.0%	328	59.5%
534 Spoon River	79	96	102	117	105	15	14.7%	38	48.1%
504 Triton	77	89	82	100	90	18	22.0%	23	29.9%
516 Waubensee	<u>307</u>	<u>382</u>	<u>394</u>	<u>387</u>	<u>388</u>	<u>-7</u>	<u>-1.8%</u>	<u>80</u>	<u>26.1%</u>
TOTALS	6,112	6,775	6,804	6,920	6,833	116	1.7%	808	13.2%
Pure									
Minimum	0	4	0	0	1	-94	-71.4%	-105	-100.0%
Maximum	667	805	807	879	800	231	1776.9%	328	1642.9%
Median	78	104	83	99	98	-5	-2.7%	8	6.7%
Standard Deviation	132	159	158	162	160	47	258.7%	66	241.6%
Average	127	141	142	144	142	2	37.5%	17	46.8%

SOURCE OF DATA: ICCB Centralized Data System--Annual Course (AC) Data



Illinois Community College Board
Table B-6
DUAL CREDIT COURSE ENROLLMENT BY COLLEGE
IN TRANSFER EDUCATION
FOR FISCAL YEARS 2015-2018

Dist. No. District/College	FY 2016-2018 3-Year Average				FY 2017-2018 1-Year Difference		FY 2015-2018 4-Year Difference		
	2015	2016	2017	2018	Number	Percent	Number	Percent	
503 Black Hawk	2,537	2,151	2,164	2,268	2,194	104	4.8%	-269	-10.6%
518 Carl Sandburg	1,116	1,016	1,161	1,488	1,222	327	28.2%	372	33.3%
508 City Colleges of Chicago	(2,308)	(3,813)	(2,766)	(5,367)	(3,982)	(2,601)	(94.0%)	(3,059)	(132.5%)
02 Harold Washington	407	541	86	961	529	875	1017.4%	554	136.1%
04 Harry S Truman	445	579	259	318	385	59	22.8%	-127	-28.5%
01 Kennedy-King	124	290	216	396	301	180	83.3%	272	219.4%
03 Malcolm X	167	364	370	581	438	211	57.0%	414	247.9%
05 Olive-Harvey	281	382	503	752	546	249	49.5%	471	167.6%
06 Richard J. Daley	486	959	870	1,162	997	292	33.6%	676	139.1%
07 Wilbur Wright	398	698	462	1,197	786	735	159.1%	799	200.8%
502 College of DuPage	2,735	2,526	2,751	2,107	2,461	-644	-23.4%	-628	-23.0%
532 College of Lake County	933	915	1,177	973	1,022	-204	-17.3%	40	4.3%
507 Danville Area	859	1,262	1,379	1,437	1,359	58	4.2%	578	67.3%
509 Elgin	85	83	66	1,311	487	1,245	1886.4%	1,226	1442.4%
512 Harper	1,220	2,124	2,999	2,342	2,488	-657	-21.9%	1,122	92.0%
540 Heartland	1,351	1,207	1,223	1,691	1,374	468	38.3%	340	25.2%
519 Highland	330	629	652	562	614	-90	-13.8%	232	70.3%
514 Illinois Central	3,052	2,997	3,413	4,507	3,639	1,094	32.1%	1,455	47.7%
529 Illinois Eastern	(3,448)	(3,166)	(3,472)	(3,133)	(3,257)	(-339)	(-9.8%)	(-315)	(-9.1%)
04 Frontier	2,028	1,695	1,879	1,766	1,780	-113	-6.0%	-262	-12.9%
01 Lincoln Trail	345	427	439	530	465	91	20.7%	185	53.6%
02 Olney Central	732	637	620	476	578	-144	-23.2%	-256	-35.0%
03 Wabash Valley	343	407	534	361	434	-173	-32.4%	18	5.2%
513 Illinois Valley	1,336	1,232	1,211	1,430	1,291	219	18.1%	94	7.0%
530 John A. Logan	1,047	1,465	1,482	1,434	1,460	-48	-3.2%	387	37.0%
539 John Wood	555	536	500	502	513	2	0.4%	-53	-9.5%
525 Joliet Junior	5,580	3,984	4,141	4,370	4,165	229	5.5%	-1,210	-21.7%
520 Kankakee	377	678	603	528	603	-75	-12.4%	151	40.1%
501 Kaskaskia	3,979	4,005	3,819	2,424	3,416	-1,395	-36.5%	-1,555	-39.1%
523 Kishwaukee	175	265	261	95	207	-166	-63.6%	-80	-45.7%
517 Lake Land	2,332	2,332	2,448	2,353	2,378	-95	-3.9%	21	0.9%
536 Lewis and Clark	5,424	5,239	5,648	5,830	5,572	182	3.2%	406	7.5%
526 Lincoln Land	2,279	2,232	2,559	2,480	2,424	-79	-3.1%	201	8.8%
528 McHenry County	1,070	1,689	1,494	1,554	1,579	60	4.0%	484	45.2%
524 Moraine Valley	308	335	380	241	319	-139	-36.6%	-67	-21.8%
527 Morton	0	91	308	225	208	-83	-26.9%	225	--
535 Oakton	396	403	494	821	573	327	66.2%	425	107.3%
505 Parkland	1,570	1,685	1,636	1,771	1,697	135	8.3%	201	12.8%
515 Prairie State	34	97	0	0	32	0	--	-34	-100.0%
521 Rend Lake	2,314	2,388	2,831	2,294	2,504	-537	-19.0%	-20	-0.9%
537 Richland	851	1,097	936	986	1,006	50	5.3%	135	15.9%
511 Rock Valley	2,737	3,139	3,173	3,199	3,170	26	0.8%	462	16.9%
506 Sauk Valley	1,553	881	1,135	1,025	1,014	-110	-9.7%	-528	-34.0%
531 Shawnee	666	706	691	668	688	-23	-3.3%	2	0.3%
510 South Suburban	147	511	477	460	483	-17	-3.6%	313	212.9%
533 Southeastern Illinois	948	991	861	864	905	3	0.3%	-84	-8.9%
522 Southwestern Illinois	3,080	3,552	3,955	5,370	4,292	1,415	35.8%	2,290	74.4%
534 Spoon River	323	565	541	650	585	109	20.1%	327	101.2%
504 Triton	672	845	664	775	761	111	16.7%	103	15.3%
516 Waubensee	<u>1,971</u>	<u>3,286</u>	<u>3,595</u>	<u>3,515</u>	<u>3,465</u>	<u>-80</u>	<u>-2.2%</u>	<u>1,544</u>	<u>78.3%</u>
TOTALS	61,698	66,118	69,066	73,050	69,411	3,984	5.8%	11,352	18.4%
Pure									
Minimum	0	83	0	0	32	-1,395	-63.6%	-1,555	-100.0%
Maximum	5,580	5,239	5,648	5,830	5,572	1,415	1886.4%	2,290	1442.4%
Median	855	937	903	1,094	1,002	38	3.2%	201	15.9%
Standard Deviation	1,303	1,197	1,314	1,336	1,276	454	307.0%	628	218.0%
Average	1,285	1,377	1,439	1,522	1,446	83	69.4%	237	71.1%

SOURCE OF DATA: ICCB Centralized Data System--Annual Course (AC) Data



Illinois Community College Board
Table B-7
AVERAGE DUAL CREDIT CLASS SIZE BY COLLEGE
IN TRANSFER EDUCATION
FOR FISCAL YEARS 2015-2018

Dist. No. District/College	FY 2016-2018 3-Year Average				FY 2017-2018 1-Year Difference		FY 2015-2018 4-Year Difference		
	2015	2016	2017	2018	Number	Percent	Number	Percent	
503 Black Hawk	11.8	11.4	11.5	9.5	10.8	-2.0	-17.6%	-2.3	-19.6%
518 Carl Sandburg	6.9	7.6	7.6	7.3	7.5	-0.3	-4.3%	0.3	4.7%
508 City Colleges of Chicago	(6.2)	(7.4)	(6.7)	(11.6)	(8.6)	(4.9)	(73.1%)	(5.4)	(85.8%)
02 Harold Washington	3.9	5.2	2.0	10.2	5.8	8.2	411.2%	6.3	161.2%
04 Harry S Truman	9.1	5.6	4.2	7.6	5.8	3.3	78.3%	-1.5	-16.6%
01 Kennedy-King	4.8	7.4	8.0	7.3	7.6	-0.7	-8.3%	2.6	53.8%
03 Malcolm X	4.9	8.1	7.6	8.9	8.2	1.4	18.4%	4.0	82.0%
05 Olive-Harvey	10.4	9.3	10.9	13.9	11.4	3.0	27.4%	3.5	33.8%
06 Richard J. Daley	8.7	7.8	6.9	13.2	9.3	6.4	92.8%	4.5	52.2%
07 Wilbur Wright	5.4	11.3	7.7	18.1	12.4	10.4	135.5%	12.8	237.2%
502 College of DuPage	19.3	19.3	19.5	18.3	19.0	-1.2	-6.1%	-0.9	-4.9%
532 College of Lake County	20.7	17.6	18.4	16.5	17.5	-1.9	-10.3%	-4.2	-20.5%
507 Danville Area	4.0	4.5	4.4	4.6	4.5	0.2	4.2%	0.6	14.7%
509 Elgin	6.1	5.5	5.1	5.4	5.3	0.3	5.8%	-0.7	-11.5%
512 Harper	20.3	16.2	18.6	18.4	17.8	-0.2	-1.0%	-1.9	-9.3%
540 Heartland	9.5	9.5	10.0	9.7	9.7	-0.4	-3.6%	0.1	1.6%
519 Highland	9.7	11.2	11.2	12.2	11.6	1.0	8.7%	2.5	25.9%
514 Illinois Central	16.9	17.4	19.4	26.7	21.2	7.3	37.5%	9.8	58.2%
529 Illinois Eastern	(12.4)	(13.9)	(11.6)	(12.7)	(12.7)	(1.1)	(9.2%)	(0.2)	(1.9%)
04 Frontier	13.7	15.4	12.4	14.8	14.2	2.4	19.3%	1.1	8.3%
01 Lincoln Trail	10.5	13.3	11.9	10.6	11.9	-1.3	-10.7%	0.1	1.4%
02 Olney Central	17.0	15.5	13.2	14.9	14.5	1.7	12.8%	-2.1	-12.6%
03 Wabash Valley	6.5	9.0	8.3	7.8	8.4	-0.5	-5.9%	1.4	21.3%
513 Illinois Valley	8.6	7.9	14.4	14.6	12.3	0.2	1.2%	6.0	70.4%
530 John A. Logan	15.4	18.8	19.0	18.9	18.9	-0.1	-0.7%	3.5	22.5%
539 John Wood	6.9	7.3	7.0	7.7	7.4	0.7	9.7%	0.8	11.3%
525 Joliet Junior	18.7	18.4	19.7	20.0	19.4	0.2	1.2%	1.2	6.6%
520 Kankakee	12.6	17.8	12.6	19.6	16.7	7.0	55.7%	7.0	55.6%
501 Kaskaskia	15.2	15.5	16.7	15.5	15.9	-1.1	-6.8%	0.3	1.9%
523 Kishwaukee	13.5	15.6	12.4	15.8	14.6	3.4	27.4%	2.4	17.6%
517 Lake Land	15.2	14.4	14.3	14.6	14.4	0.3	2.1%	-0.6	-4.1%
536 Lewis and Clark	18.3	18.8	18.6	19.4	19.0	0.8	4.3%	1.1	6.1%
526 Lincoln Land	16.9	16.3	17.3	17.2	16.9	-0.1	-0.4%	0.3	2.0%
528 McHenry County	19.5	25.2	25.8	22.2	24.4	-3.6	-13.8%	2.7	14.1%
524 Moraine Valley	17.1	19.7	18.1	17.2	18.3	-0.9	-4.9%	0.1	0.6%
527 Morton	--	15.2	16.2	12.5	14.6	-3.7	-22.9%	--	--
535 Oakton	17.2	17.5	18.3	21.6	19.1	3.3	18.1%	4.4	25.5%
505 Parkland	6.4	7.2	7.3	8.1	7.5	0.8	10.2%	1.7	25.7%
515 Prairie State	11.3	24.3	--	--	24.3	--	--	--	--
521 Rend Lake	16.1	13.3	15.1	14.1	14.1	-1.0	-6.5%	-2.0	-12.4%
537 Richland	5.7	6.2	5.4	7.4	6.4	2.0	36.2%	1.7	29.8%
511 Rock Valley	4.1	3.9	3.9	4.5	4.1	0.6	14.1%	0.4	9.3%
506 Sauk Valley	6.1	3.8	4.7	4.4	4.3	-0.4	-7.8%	-1.8	-28.6%
531 Shawnee	18.0	17.2	15.7	17.6	16.8	1.9	11.9%	-0.4	-2.3%
510 South Suburban	7.7	8.8	6.7	18.4	11.3	11.7	173.9%	10.7	137.8%
533 Southeastern Illinois	6.7	6.7	6.0	7.3	6.6	1.2	20.6%	0.5	8.0%
522 Southwestern Illinois	5.6	4.6	5.3	6.1	5.3	0.8	16.0%	0.5	9.3%
534 Spoon River	4.1	5.9	5.3	5.6	5.6	0.3	4.7%	1.5	35.9%
504 Triton	8.7	9.5	8.1	7.8	8.4	-0.3	-4.3%	-1.0	-11.2%
516 Waubensee	<u>6.4</u>	<u>8.6</u>	<u>9.1</u>	<u>9.1</u>	<u>8.9</u>	<u>0.0</u>	<u>-0.5%</u>	<u>2.7</u>	<u>41.5%</u>
TOTALS/AVERAGES	10.1	9.8	10.2	10.6	10.2	0.4	4.0%	0.5	4.6%
Pure									
Minimum	3.9	3.8	2.0	4.4	4.1	-3.7	-22.9%	-4.2	-28.6%
Maximum	20.7	25.2	25.8	26.7	24.4	11.7	411.2%	12.8	237.2%
Median	9.7	11.2	11.2	13.2	11.7	0.3	4.3%	0.9	9.3%
Standard Deviation	5.3	5.6	5.6	5.5	5.6	3.2	68.0%	3.4	49.2%
Average	11.1	12.0	11.5	12.8	12.3	1.3	23.9%	1.7	24.7%

SOURCE OF DATA: ICCB Centralized Data System--Annual Course (AC) Data



Illinois Community College Board
Table B-8
TOP FIVE DUAL CREDIT COURSE ENROLLMENTS BY COLLEGE
IN TRANSFER EDUCATION
FISCAL YEAR 2018

Dist. No. District/College	23.1301 Writing, General*	27.0101 Mathematics, General	16.0905 Spanish Language and Literature	54.0102 American History (United States)	23.1304 Rhetoric and Composition**	Total
503 Black Hawk	908	113	17	157	254	1,449
518 Carl Sandburg	518	24	0	16	182	740
508 City Colleges of Chicago	(1,712)	(1,055)	(595)	(237)	(5)	(3,604)
02 Harold Washington	422	151	14	73	1	661
04 Harry S Truman	81	90	2	23	0	196
01 Kennedy-King	202	11	0	45	4	262
03 Malcolm X	95	101	214	5	0	415
05 Olive-Harvey	230	68	61	61	0	420
06 Richard J. Daley	413	167	156	30	0	766
07 Wilbur Wright	269	467	148	0	0	884
502 College of DuPage	0	69	216	86	0	371
532 College of Lake County	67	0	0	0	38	105
507 Danville Area	306	27	32	134	65	564
509 Elgin	242	125	14	13	24	418
512 Harper	255	72	570	0	321	1,218
540 Heartland	625	0	4	129	0	758
519 Highland	85	40	32	60	40	257
514 Illinois Central	1,503	246	103	485	149	2,486
529 Illinois Eastern	(766)	(327)	(143)	(228)	(294)	(1,758)
04 Frontier	429	193	0	88	131	841
01 Lincoln Trail	106	105	142	12	38	403
02 Olney Central	139	0	1	122	53	315
03 Wabash Valley	92	29	0	6	72	199
513 Illinois Valley	327	103	0	134	239	803
530 John A. Logan	296	51	209	0	91	647
539 John Wood	175	51	88	0	7	321
525 Joliet Junior	2,504	198	0	278	57	3,037
520 Kankakee	193	22	40	62	0	317
501 Kaskaskia	581	366	145	143	179	1,414
523 Kishwaukee	0	0	0	0	49	49
517 Lake Land	837	438	85	0	97	1,457
536 Lewis and Clark	1,177	573	1,104	694	213	3,761
526 Lincoln Land	469	176	275	379	222	1,521
528 McHenry County	357	55	749	0	0	1,161
524 Moraine Valley	57	47	0	0	0	104
527 Morton	0	0	0	0	0	0
535 Oakton	261	181	0	0	0	442
505 Parkland	968	40	3	127	3	1,141
515 Prairie State	0	0	0	0	0	0
521 Rend Lake	442	696	97	28	50	1,313
537 Richland	526	20	2	11	21	580
511 Rock Valley	343	312	44	229	161	1,089
506 Sauk Valley	274	146	9	13	82	524
531 Shawnee	198	105	68	56	0	427
510 South Suburban	0	0	0	0	0	0
533 Southeastern Illinois	174	25	12	11	45	267
522 Southwestern Illinois	840	399	84	339	720	2,382
534 Spoon River	212	38	0	8	145	403
504 Triton	196	46	20	194	0	456
516 Waubousee	<u>633</u>	<u>359</u>	<u>286</u>	<u>135</u>	<u>319</u>	<u>1,732</u>
TOTALS	19,027	6,545	5,046	4,386	4,072	39,076
Grand Total	117,672	117,672	117,672	117,672	117,672	117,672
Percent Top Five of Grand	16.2%	5.6%	4.3%	3.7%	3.5%	33.2%

SOURCE OF DATA: ICCB Centralized Data System--Annual Course (AC) Data



Illinois Community College Board
Table B-9
DUAL CREDIT COURSE COUNT BY COLLEGE
IN CAREER AND TECHNICAL EDUCATION
FISCAL YEARS 2015-2018

Dist. No. District/College	FY 2016-2018 3-Year Average				FY 2017-2018 1-Year Difference		FY 2015-2018 4-Year Difference		
	2015	2016	2017	2018	Number	Percent	Number	Percent	
503 Black Hawk	118	122	123	120	122	-3	-2.4%	2	1.7%
518 Carl Sandburg	40	45	48	51	48	3	6.3%	11	27.5%
508 City Colleges of Chicago	(56)	(81)	(69)	(112)	(87)	(43)	(62.3%)	(56)	(100.0%)
02 Harold Washington	14	14	3	31	16	28	933.3%	17	121.4%
04 Harry S Truman	11	15	8	10	11	2	25.0%	-1	-9.1%
01 Kennedy-King	1	7	2	15	8	13	650.0%	14	1400.0%
03 Malcolm X	9	10	4	15	10	11	275.0%	6	66.7%
05 Olive-Harvey	0	4	6	13	8	7	116.7%	13	--
06 Richard J. Daley	6	15	33	17	22	-16	-48.5%	11	183.3%
07 Wilbur Wright	15	16	13	11	13	-2	-15.4%	-4	-26.7%
502 College of DuPage	339	303	318	316	312	-2	-0.6%	-23	-6.8%
532 College of Lake County	94	99	90	114	101	24	26.7%	20	21.3%
507 Danville Area	308	297	319	306	307	-13	-4.1%	-2	-0.6%
509 Elgin	69	65	56	66	62	10	17.9%	-3	-4.3%
512 Harper	129	165	208	215	196	7	3.4%	86	66.7%
540 Heartland	42	57	53	63	58	10	18.9%	21	50.0%
519 Highland	97	104	105	84	98	-21	-20.0%	-13	-13.4%
514 Illinois Central	50	52	77	99	76	22	28.6%	49	98.0%
529 Illinois Eastern	(129)	(126)	(201)	(198)	(175)	(-3)	(-1.5%)	(69)	(53.5%)
04 Frontier	58	49	99	96	81	-3	-3.0%	38	65.5%
01 Lincoln Trail	12	15	17	17	16	0	0.0%	5	41.7%
02 Olney Central	16	16	19	24	20	5	26.3%	8	50.0%
03 Wabash Valley	43	46	66	61	58	-5	-7.6%	18	41.9%
513 Illinois Valley	43	35	73	62	57	-11	-15.1%	19	44.2%
530 John A. Logan	43	43	38	58	46	20	52.6%	15	34.9%
539 John Wood	14	14	20	14	16	-6	-30.0%	0	0.0%
525 Joliet Junior	173	91	158	181	143	23	14.6%	8	4.6%
520 Kankakee	18	16	24	24	21	0	0.0%	6	33.3%
501 Kaskaskia	268	258	211	209	226	-2	-0.9%	-59	-22.0%
523 Kishwaukee	47	44	59	48	50	-11	-18.6%	1	2.1%
517 Lake Land	163	169	201	227	199	26	12.9%	64	39.3%
536 Lewis and Clark	282	264	251	229	248	-22	-8.8%	-53	-18.8%
526 Lincoln Land	103	108	100	89	99	-11	-11.0%	-14	-13.6%
528 McHenry County	46	36	55	57	49	2	3.6%	11	23.9%
524 Moraine Valley	119	126	150	160	145	10	6.7%	41	34.5%
527 Morton	17	9	29	8	15	-21	-72.4%	-9	-52.9%
535 Oakton	30	34	44	46	41	2	4.5%	16	53.3%
505 Parkland	92	101	89	65	85	-24	-27.0%	-27	-29.3%
515 Prairie State	77	71	45	57	58	12	26.7%	-20	-26.0%
521 Rend Lake	47	87	86	105	93	19	22.1%	58	123.4%
537 Richland	77	113	97	89	100	-8	-8.2%	12	15.6%
511 Rock Valley	60	91	65	64	73	-1	-1.5%	4	6.7%
506 Sauk Valley	85	96	96	112	101	16	16.7%	27	31.8%
531 Shawnee	17	18	20	26	21	6	30.0%	9	52.9%
510 South Suburban	103	98	88	148	111	60	68.2%	45	43.7%
533 Southeastern Illinois	114	114	88	92	98	4	4.5%	-22	-19.3%
522 Southwestern Illinois	218	224	212	230	222	18	8.5%	12	5.5%
534 Spoon River	8	28	30	22	27	-8	-26.7%	14	175.0%
504 Triton	36	53	87	92	77	5	5.7%	56	155.6%
516 Waubensee	<u>103</u>	<u>108</u>	<u>107</u>	<u>92</u>	<u>102</u>	<u>-15</u>	<u>-14.0%</u>	<u>-11</u>	<u>-10.7%</u>
TOTALS	3,874	3,965	4,190	4,350	4,168	160	3.8%	476	12.3%
Pure									
Minimum	0	4	2	8	8	-24	-72.4%	-59	-52.9%
Maximum	339	303	319	316	312	60	933.3%	86	1400.0%
Median	49	55	70	65	68	2	4.1%	10	27.5%
Standard Deviation	82	77	78	78	77	16	165.8%	27	206.4%
Average	81	83	87	91	87	3	43.1%	10	60.9%

SOURCE OF DATA: ICCB Centralized Data System--Annual Course (AC) Data



Illinois Community College Board
Table B-10
DUAL CREDIT COURSE ENROLLMENT BY COLLEGE
IN CAREER AND TECHNICAL EDUCATION
FISCAL YEARS 2015-2018

Dist. No. District/College	FY 2016-2018 3-Year Average				FY 2017-2018 1-Year Difference		FY 2015-2018 4-Year Difference		
	2015	2016	2017	2018	Number	Percent	Number	Percent	
503 Black Hawk	1,152	1,092	1,064	826	994	-238	-22.4%	-326	-28.3%
518 Carl Sandburg	292	412	392	451	418	59	15.1%	159	54.5%
508 City Colleges of Chicago	(315)	(790)	(433)	(1,195)	(806)	(762)	(176.0%)	(880)	(279.4%)
02 Harold Washington	61	251	6	558	272	552	9200.0%	497	814.8%
04 Harry S Truman	76	76	24	57	52	33	137.5%	-19	-25.0%
01 Kennedy-King	20	44	5	91	47	86	1720.0%	71	355.0%
03 Malcolm X	9	32	19	75	42	56	294.7%	66	733.3%
05 Olive-Harvey	0	33	46	161	80	115	250.0%	161	--
06 Richard J. Daley	27	135	187	143	155	-44	-23.5%	116	429.6%
07 Wilbur Wright	122	219	146	110	158	-36	-24.7%	-12	-9.8%
502 College of DuPage	4,893	5,513	5,518	5,444	5,492	-74	-1.3%	551	11.3%
532 College of Lake County	1,004	860	791	1,053	901	262	33.1%	49	4.9%
507 Danville Area	1,037	1,044	1,133	1,089	1,089	-44	-3.9%	52	5.0%
509 Elgin	289	282	196	274	251	78	39.8%	-15	-5.2%
512 Harper	1,878	1,973	2,491	2,238	2,234	-253	-10.2%	360	19.2%
540 Heartland	346	316	391	551	419	160	40.9%	205	59.2%
519 Highland	976	1,111	1,079	977	1,056	-102	-9.5%	1	0.1%
514 Illinois Central	872	789	1,213	1,839	1,280	626	51.6%	967	110.9%
529 Illinois Eastern	(866)	(1,089)	(1,404)	(1,451)	(1,315)	(47)	(3.3%)	(585)	(67.6%)
04 Frontier	427	443	716	738	632	22	3.1%	311	72.8%
01 Lincoln Trail	72	111	89	98	99	9	10.1%	26	36.1%
02 Olney Central	91	146	146	207	166	61	41.8%	116	127.5%
03 Wabash Valley	276	389	453	408	417	-45	-9.9%	132	47.8%
513 Illinois Valley	116	95	494	421	337	-73	-14.8%	305	262.9%
530 John A. Logan	372	488	514	684	562	170	33.1%	312	83.9%
539 John Wood	37	38	97	88	74	-9	-9.3%	51	137.8%
525 Joliet Junior	1,417	746	2,042	2,433	1,740	391	19.1%	1,016	71.7%
520 Kankakee	267	231	313	413	319	100	31.9%	146	54.7%
501 Kaskaskia	3,150	3,146	2,898	2,663	2,902	-235	-8.1%	-487	-15.5%
523 Kishwaukee	544	530	588	490	536	-98	-16.7%	-54	-9.9%
517 Lake Land	1,267	1,252	1,510	1,455	1,406	-55	-3.6%	188	14.8%
536 Lewis and Clark	3,582	3,655	3,455	3,079	3,396	-376	-10.9%	-503	-14.0%
526 Lincoln Land	945	783	941	888	871	-53	-5.6%	-57	-6.0%
528 McHenry County	450	337	806	819	654	13	1.6%	369	82.0%
524 Moraine Valley	1,899	2,297	2,976	2,951	2,741	-25	-0.8%	1,052	55.4%
527 Morton	201	136	315	112	188	-203	-64.4%	-89	-44.3%
535 Oakton	400	500	531	697	576	166	31.3%	297	74.3%
505 Parkland	580	691	709	506	635	-203	-28.6%	-74	-12.8%
515 Prairie State	1,002	1,068	647	897	871	250	38.6%	-105	-10.5%
521 Rend Lake	531	652	546	504	567	-42	-7.7%	-27	-5.1%
537 Richland	796	1,005	940	755	900	-185	-19.7%	-41	-5.2%
511 Rock Valley	301	357	207	168	244	-39	-18.8%	-133	-44.2%
506 Sauk Valley	587	768	752	762	761	10	1.3%	175	29.8%
531 Shawnee	204	207	179	298	228	119	66.5%	94	46.1%
510 South Suburban	813	646	711	1,707	1,021	996	140.1%	894	110.0%
533 Southeastern Illinois	627	798	641	633	691	-8	-1.2%	6	1.0%
522 Southwestern Illinois	2,509	2,300	2,266	2,423	2,330	157	6.9%	-86	-3.4%
534 Spoon River	28	127	85	74	95	-11	-12.9%	46	164.3%
504 Triton	195	324	590	605	506	15	2.5%	410	210.3%
516 Waubensee	<u>905</u>	<u>795</u>	<u>719</u>	<u>709</u>	<u>741</u>	<u>-10</u>	<u>-1.4%</u>	<u>-196</u>	<u>-21.7%</u>
TOTALS	37,645	39,243	42,577	44,622	42,147	2,045	4.8%	6,977	18.5%
Pure									
Minimum	0	32	5	57	42	-376	-64.4%	-503	-44.3%
Maximum	4,893	5,513	5,518	5,444	5,492	996	9200.0%	1,052	814.8%
Median	439	494	589	619	572	1	0.2%	69	29.8%
Standard Deviation	983	1,032	1,060	1,033	1,038	230	1329.7%	332	176.0%
Average	784	818	887	930	878	43	247.5%	145	85.5%

SOURCE OF DATA: ICCB Centralized Data System--Annual Course (AC) Data



Illinois Community College Board
Table B-11
AVERAGE DUAL CREDIT CLASS SIZE BY COLLEGE
IN CAREER AND TECHNICAL EDUCATION
FISCAL YEARS 2015-2018

Dist. No. District/College	FY 2016-2018 3-Year Average				FY 2017-2018 1-Year Difference		FY 2015-2018 4-Year Difference		
	2015	2016	2017	2018	Number	Percent	Number	Percent	
503 Black Hawk	9.8	9.0	8.7	6.9	8.2	-1.8	-20.4%	-2.9	-29.5%
518 Carl Sandburg	7.3	9.2	8.2	8.8	8.7	0.7	8.3%	1.5	21.1%
508 City Colleges of Chicago	(5.6)	(9.8)	(6.3)	(10.7)	(8.9)	(4.4)	(70.0%)	(5.0)	(89.7%)
02 Harold Washington	4.4	17.9	2.0	18.0	12.6	16.0	800.0%	13.6	313.1%
04 Harry S Truman	6.9	5.1	3.0	5.7	4.6	2.7	90.0%	-1.2	-17.5%
01 Kennedy-King	20.0	6.3	2.5	6.1	5.0	3.6	142.7%	-13.9	-69.7%
03 Malcolm X	1.0	3.2	4.8	5.0	4.3	0.3	5.3%	4.0	400.0%
05 Olive-Harvey	--	8.3	7.7	12.4	9.4	4.7	61.5%	--	--
06 Richard J. Daley	4.5	9.0	5.7	8.4	7.7	2.7	48.4%	3.9	86.9%
07 Wilbur Wright	8.1	13.7	11.2	10.0	11.6	-1.2	-11.0%	1.9	23.0%
502 College of DuPage	14.4	18.2	17.4	17.2	17.6	-0.1	-0.7%	2.8	19.4%
532 College of Lake County	10.7	8.7	8.8	9.2	8.9	0.4	5.1%	-1.4	-13.5%
507 Danville Area	3.4	3.5	3.6	3.6	3.5	0.0	0.2%	0.2	5.7%
509 Elgin	4.2	4.3	3.5	4.2	4.0	0.7	18.6%	0.0	-0.9%
512 Harper	14.6	12.0	12.0	10.4	11.4	-1.6	-13.1%	-4.1	-28.5%
540 Heartland	8.2	5.5	7.4	8.7	7.2	1.4	18.6%	0.5	6.2%
519 Highland	10.1	10.7	10.3	11.6	10.9	1.4	13.2%	1.6	15.6%
514 Illinois Central	17.4	15.2	15.8	18.6	16.5	2.8	17.9%	1.1	6.5%
529 Illinois Eastern	(6.7)	(8.6)	(7.0)	(7.3)	(7.7)	(0.3)	(4.9%)	(0.6)	(9.2%)
04 Frontier	7.4	9.0	7.2	7.7	8.0	0.5	6.3%	0.3	4.4%
01 Lincoln Trail	6.0	7.4	5.2	5.8	6.1	0.5	10.1%	-0.2	-3.9%
02 Olney Central	5.7	9.1	7.7	8.6	8.5	0.9	12.2%	2.9	51.6%
03 Wabash Valley	6.4	8.5	6.9	6.7	7.3	-0.2	-2.6%	0.3	4.2%
513 Illinois Valley	2.7	2.7	6.8	6.8	5.4	0.0	0.3%	4.1	151.7%
530 John A. Logan	8.7	11.3	13.5	11.8	12.2	-1.7	-12.8%	3.1	36.3%
539 John Wood	2.6	2.7	4.9	6.3	4.6	1.4	29.6%	3.6	137.8%
525 Joliet Junior	8.2	8.2	12.9	13.4	11.5	0.5	4.0%	5.3	64.1%
520 Kankakee	14.8	14.4	13.0	17.2	14.9	4.2	31.9%	2.4	16.0%
501 Kaskaskia	11.8	12.2	13.7	12.7	12.9	-1.0	-7.2%	1.0	8.4%
523 Kishwaukee	11.6	12.0	10.0	10.2	10.7	0.2	2.4%	-1.4	-11.8%
517 Lake Land	7.8	7.4	7.5	6.4	7.1	-1.1	-14.7%	-1.4	-17.5%
536 Lewis and Clark	12.7	13.8	13.8	13.4	13.7	-0.3	-2.3%	0.7	5.9%
526 Lincoln Land	9.2	7.3	9.4	10.0	8.9	0.6	6.0%	0.8	8.7%
528 McHenry County	9.8	9.4	14.7	14.4	12.8	-0.3	-2.0%	4.6	46.9%
524 Moraine Valley	16.0	18.2	19.8	18.4	18.8	-1.4	-7.0%	2.5	15.6%
527 Morton	11.8	15.1	10.9	14.0	13.3	3.1	28.9%	2.2	18.4%
535 Oakton	13.3	14.7	12.1	15.2	14.0	3.1	25.6%	1.8	13.6%
505 Parkland	6.3	6.8	8.0	7.8	7.5	-0.2	-2.3%	1.5	23.5%
515 Prairie State	13.0	15.0	14.4	15.7	15.1	1.4	9.5%	2.7	20.9%
521 Rend Lake	11.3	7.5	6.3	4.8	6.2	-1.5	-24.4%	-6.5	-57.5%
537 Richland	10.3	8.9	9.7	8.5	9.0	-1.2	-12.5%	-1.9	-17.9%
511 Rock Valley	5.0	3.9	3.2	2.6	3.2	-0.6	-17.6%	-2.4	-47.7%
506 Sauk Valley	6.9	8.0	7.8	6.8	7.5	-1.0	-13.1%	-0.1	-1.5%
531 Shawnee	12.0	11.5	9.0	11.5	10.6	2.5	28.1%	-0.5	-4.5%
510 South Suburban	7.9	6.6	8.1	11.5	8.7	3.5	42.8%	3.6	46.1%
533 Southeastern Illinois	5.5	7.0	7.3	6.9	7.1	-0.4	-5.5%	1.4	25.1%
522 Southwestern Illinois	11.5	10.3	10.7	10.5	10.5	-0.2	-1.4%	-1.0	-8.5%
534 Spoon River	3.5	4.5	2.8	3.4	3.6	0.5	18.7%	-0.1	-3.9%
504 Triton	5.4	6.1	6.8	6.6	6.5	-0.2	-3.0%	1.2	21.4%
516 Waubonsee	<u>8.8</u>	<u>7.4</u>	<u>6.7</u>	<u>7.7</u>	<u>7.3</u>	<u>1.0</u>	<u>14.7%</u>	<u>-1.1</u>	<u>-12.3%</u>
TOTALS/AVERAGES	9.7	9.9	10.2	10.3	10.1	0.1	0.9%	0.5	5.6%
Pure									
Minimum	1.0	2.7	2.0	2.6	3.2	-1.8	-24.4%	-13.9	-69.7%
Maximum	20.0	18.2	19.8	18.6	18.8	16.0	800.0%	13.6	400.0%
Median	8.2	8.8	8.0	8.8	8.7	0.5	5.2%	1.0	8.4%
Standard Deviation	4.1	4.1	4.0	4.2	3.9	2.7	116.3%	3.7	81.3%
Average	8.9	9.3	8.8	9.8	9.3	0.9	27.7%	0.8	27.1%

SOURCE OF DATA: ICCB Centralized Data System--Annual Course (AC) Data



Illinois Community College Board
Table B-12
TOP FIVE DUAL CREDIT COURSE ENROLLMENTS BY COLLEGE
IN CAREER AND TECHNICAL EDUCATION
FISCAL YEAR 2018

Dist. No. District/College	48.0508 Welding Technology/Welder	51.3902 Nursing Assistant/Aide and Patient Care Assistant/Aide	11.0201 Computer Programming/Programmer, General	52.0407 Business/Office Automation/Technology/Data Entry	52.0408 General Office Occupations and Clerical Services	Total
503 Black Hawk	339	93	13	8	0	453
518 Carl Sandburg	87	2	0	3	5	97
508 City Colleges of Chicago	(0)	(0)	(60)	(128)	(0)	(188)
02 Harold Washington	0	0	1	1	0	2
04 Harry S Truman	0	0	0	0	0	0
01 Kennedy-King	0	0	0	0	0	0
03 Malcolm X	0	0	0	15	0	15
05 Olive-Harvey	0	0	0	67	0	67
06 Richard J. Daley	0	0	59	37	0	96
07 Wilbur Wright	0	0	0	8	0	8
502 College of DuPage	37	57	202	0	316	612
532 College of Lake County	30	115	0	0	0	145
507 Danville Area	43	20	35	1	5	104
509 Elgin	28	13	8	0	0	49
512 Harper	0	304	0	129	0	433
540 Heartland	66	125	0	0	0	191
519 Highland	48	66	29	16	27	186
514 Illinois Central	244	334	0	0	0	578
529 Illinois Eastern	(129)	(91)	(14)	(2)	(16)	(252)
04 Frontier	10	64	14	2	6	96
01 Lincoln Trail	49	0	0	0	0	49
02 Olney Central	50	5	0	0	0	55
03 Wabash Valley	20	22	0	0	10	52
513 Illinois Valley	141	59	0	10	50	260
530 John A. Logan	41	90	0	0	12	143
539 John Wood	53	4	0	0	0	57
525 Joliet Junior	74	247	96	0	0	417
520 Kankakee	42	106	0	0	0	148
501 Kaskaskia	67	71	31	697	714	1,580
523 Kishwaukee	53	58	0	0	0	111
517 Lake Land	119	165	22	69	0	375
536 Lewis and Clark	297	0	89	56	748	1,190
526 Lincoln Land	50	11	18	0	17	96
528 McHenry County	0	93	0	0	0	93
524 Moraine Valley	26	0	16	619	0	661
527 Morton	0	0	0	13	0	13
535 Oakton	0	31	0	0	0	31
505 Parkland	10	37	3	0	2	52
515 Prairie State	63	0	0	0	0	63
521 Rend Lake	37	37	0	0	0	74
537 Richland	60	30	0	151	0	241
511 Rock Valley	30	21	29	0	0	80
506 Sauk Valley	85	164	32	10	2	293
531 Shawnee	0	48	0	0	0	48
510 South Suburban	0	0	999	0	98	1,097
533 Southeastern Illinois	110	0	3	16	26	155
522 Southwestern Illinois	285	67	503	163	0	1,018
534 Spoon River	29	5	0	0	0	34
504 Triton	0	112	0	0	0	112
516 Waubensee	<u>110</u>	<u>21</u>	<u>3</u>	<u>0</u>	<u>0</u>	<u>134</u>
TOTALS	2,833	2,697	2,205	2,091	2,038	11,864
Grand Total	117,672	117,672	117,672	117,672	117,672	117,672
Percent Top Five of Grand	2.4%	2.3%	1.9%	1.8%	1.7%	10.1%

SOURCE OF DATA: ICCB Centralized Data System--Annual Course (AC) Data



Illinois Community College Board
Table B-13
STATEWIDE DUAL CREDIT COURSE ENROLLMENT BY 6-DIGIT CIP
FOR FISCAL YEARS 2015-2018

CIP	COURSE NAME	2015	2016	2017	FY 2016-2018		FY 2017-2018		FY 2015-2018	
					2018	3-Year Average Number	Number	Percent	Number	Percent
01.0101	Agricultural Business and Management, General.	134	177	215	242	211	27	12.6%	108	80.6%
01.0102	Agribusiness/Agricultural Business Operations.	0	0	0	8	3	8	--	8	--
01.0103	Agricultural Economics.	74	40	41	70	50	29	70.7%	-4	-5.4%
01.0105	Agricultural/Farm Supplies Retailing and Wholesaling.	0	0	0	9	3	9	--	9	--
01.0106	Agricultural Business Technology	1	0	0	0	0	0	--	-1	-100.0%
01.0201	Agricultural Mechanization, General.	151	155	134	105	131	-29	-21.6%	-46	-30.5%
01.0301	Agricultural Production Operations, General.	102	139	152	146	146	-6	-3.9%	44	43.1%
01.0302	Animal/Livestock Husbandry and Production.	123	202	170	194	189	24	14.1%	71	57.7%
01.0304	Crop Production.	1	7	9	25	14	16	177.8%	24	2400.0%
01.0601	Applied Horticulture/Horticulture Operations, General.	254	238	182	204	208	22	12.1%	-50	-19.7%
01.0602	Arboriculture (Cross to 01.0699 for IPEDS)	13	25	23	0	16	-23	-100.0%	-13	-100.0%
01.0603	Ornamental Horticulture.	307	284	271	291	282	20	7.4%	-16	-5.2%
01.0604	Greenhouse Operations and Management.	75	29	93	47	56	-46	-49.5%	-28	-37.3%
01.0605	Landscaping and Groundskeeping.	89	44	84	82	70	-2	-2.4%	-7	-7.9%
01.0607	Turf and Turfgrass Management	0	9	0	0	3	0	--	0	--
01.0901	Animal Sciences, General.	13	24	52	49	42	-3	-5.8%	36	276.9%
01.1102	Agronomy and Crop Science.	68	49	84	90	74	6	7.1%	22	32.4%
01.1103	Horticultural Science.	109	34	101	112	82	11	10.9%	3	2.8%
01.1201	Soil Science and Agronomy, General (Moved from 02.0501)	2	0	9	0	3	-9	-100.0%	-2	-100.0%
01.9994	Career Exploration.	22	22	13	11	15	-2	-15.4%	-11	-50.0%
01.9997	Topics.	6	0	0	4	1	4	--	-2	-33.3%
01.9998	Internships.	0	0	1	0	0	-1	-100.0%	0	--
01.9999	Agriculture, Agriculture Operations, and Related Sciences, Other.	5	5	8	7	7	-1	-12.5%	2	40.0%
03.0101	Natural Resources/Conservation, General	0	0	1	0	0	-1	-100.0%	0	--
03.0201	Natural Resources Management and Policy.	0	12	2	4	6	2	100.0%	4	--
03.0511	Forest Technology/Technician.	0	0	0	17	6	17	--	17	--
03.0601	Wildlife, Fish and Wildlands Science and Management.	25	10	11	17	13	6	54.5%	-8	-32.0%
04.0201	Architecture.	8	20	34	38	31	4	11.8%	30	375.0%
05.0101	African Studies	1	0	0	0	0	0	--	-1	-100.0%
05.0103	Asian Studies/Civilization	1	0	0	0	0	0	--	-1	-100.0%
05.0107	Latin American Studies.	0	3	26	25	18	-1	-3.8%	25	--
05.0108	Near and Middle Eastern Studies.	0	1	0	1	1	1	--	1	--
05.0201	African-American/Black Studies.	98	28	25	146	66	121	484.0%	48	49.0%
05.0202	American Indian/Native American Studies.	0	1	0	1	1	1	--	1	--
05.0299	Ethnic, Cultural Minority, Gender, and Group Studies, Other.	1	4	0	1	2	1	--	0	0.0%
09.0100	Communication, General	0	1	0	0	0	0	--	0	--
09.0101	Speech Communication and Rhetoric.	0	0	158	111	90	-47	-29.7%	111	--
09.0102	Mass Communication/Media Studies.	33	5	15	29	16	14	93.3%	-4	-12.1%
09.0401	Journalism.	347	287	302	221	270	-81	-26.8%	-126	-36.3%
09.0402	Broadcast Journalism	9	4	2	0	2	-2	-100.0%	-9	-100.0%
09.0701	Radio and Television.	108	82	88	68	79	-20	-22.7%	-40	-37.0%
09.0702	Digital Communication and Media/Multimedia	1	0	0	0	0	0	--	-1	-100.0%
09.0799	Radio, Television, and Digital Communication, Other.	0	0	7	1	3	-6	-85.7%	1	--
09.0903	Advertising.	16	0	25	1	9	-24	-96.0%	-15	-93.8%
09.9998	Internships.	1	8	3	0	4	-3	-100.0%	-1	-100.0%
10.0201	Photographic and Film/Video Technology/Technician and Assistant.	183	181	130	140	150	10	7.7%	-43	-23.5%
10.0202	Radio and Television Broadcasting Technology/Technician.	21	26	6	8	13	2	33.3%	-13	-61.9%
10.0203	Recording Arts Technology/Technician.	0	1	0	27	9	27	--	27	--
10.0301	Graphic Communications, General.	36	13	7	7	9	0	0.0%	-29	-80.6%
10.0303	Prepress/Desktop Publishing and Digital Imaging Design.	483	477	455	511	481	56	12.3%	28	5.8%
10.0304	Animation, Interactive Technology, Video Graphics and Special Effects.	222	169	333	328	277	-5	-1.5%	106	47.7%
10.0305	Graphic and Printing Equipment Operator, General Production.	41	50	67	46	54	-21	-31.3%	5	12.2%
10.9997	Topics.	0	0	1	0	0	-1	-100.0%	0	--



Illinois Community College Board
Table B-13
STATEWIDE DUAL CREDIT COURSE ENROLLMENT BY 6-DIGIT CIP
FOR FISCAL YEARS 2015-2018

CIP	COURSE NAME	2015	2016	2017	FY 2016-2018		FY 2017-2018		FY 2015-2018	
					3-Year Average	Number	1-Year Difference	Percent	4-Year Difference	Percent
10.9999	Communications Technologies/Technicians and Support Services, Other.	19	14	22	24	20	2	9.1%	5	26.3%
11.0101	Computer and Information Sciences, General.	880	1,577	1,268	1,098	1,314	-170	-13.4%	218	24.8%
11.0103	Information Technology.	133	97	121	115	111	-6	-5.0%	-18	-13.5%
11.0201	Computer Programming/Programmer, General.	1,155	1,639	1,800	2,221	1,887	421	23.4%	1,066	92.3%
11.0202	Computer Programming, Specific Applications.	87	65	107	64	79	-43	-40.2%	-23	-26.4%
11.0203	Computer Programming, Vendor/Product Certification.	139	80	108	29	72	-79	-73.1%	-110	-79.1%
11.0301	Data Processing and Data Processing Technology/Technician.	89	74	76	91	80	15	19.7%	2	2.2%
11.0401	Information Science/Studies.	4	0	1	1	1	0	0.0%	-3	-75.0%
11.0501	Computer Systems Analysis/Analyst	13	10	2	0	4	-2	-100.0%	-13	-100.0%
11.0601	Data Entry/Microcomputer Applications, General.	285	363	436	342	380	-94	-21.6%	57	20.0%
11.0602	Word Processing.	24	23	28	26	26	-2	-7.1%	2	8.3%
11.0801	Web Page, Digital/Multimedia and Information Resources Design.	748	562	590	434	529	-156	-26.4%	-314	-42.0%
11.0802	Data Modeling/Warehousing and Database Administration.	24	11	17	11	13	-6	-35.3%	-13	-54.2%
11.0803	Computer Graphics.	51	91	139	44	91	-95	-68.3%	-7	-13.7%
11.0901	Computer Systems Networking and Telecommunications.	1,716	1,420	1,548	1,404	1,457	-144	-9.3%	-312	-18.2%
11.1002	System, Networking, and LAN/WAN Management/Manager	15	0	0	0	0	0	--	-15	-100.0%
11.1003	Computer and Information Systems Security/Information Assurance.	19	13	5	7	8	2	40.0%	-12	-63.2%
11.1004	Web/Multimedia Management and Webmaster.	155	59	71	80	70	9	12.7%	-75	-48.4%
11.1099	Computer/Information Technology Services Administration and Management, Other.	73	82	76	42	67	-34	-44.7%	-31	-42.5%
11.9997	Topics.	13	18	20	19	19	-1	-5.0%	6	46.2%
11.9998	Internships.	1	0	0	0	0	0	--	-1	-100.0%
12.0401	Cosmetology/Cosmetologist, General.	843	815	763	709	762	-54	-7.1%	-134	-15.9%
12.0406	Make-up Artist/Specialist	3	0	0	0	0	0	--	-3	-100.0%
12.0409	Aesthetician/Esthetician and Skin Care Specialist.	149	155	138	145	146	7	5.1%	-4	-2.7%
12.0412	Salon/Beauty Salon Management/Manager.	295	311	274	259	281	-15	-5.5%	-36	-12.2%
12.0501	Baking and Pastry Arts/Baker/Pastry Chef.	7	6	62	124	64	62	100.0%	117	1671.4%
12.0503	Culinary Arts/Chef Training.	313	229	502	485	405	-17	-3.4%	172	55.0%
12.0504	Restaurant, Culinary, and Catering Management/Manager.	412	641	750	849	747	99	13.2%	437	106.1%
12.0505	Food Preparation/Professional Cooking/Kitchen Assistant.	0	54	0	72	42	72	--	72	--
12.0507	Food Service, Waiter/Waitress, and Dining Room Management/Manager.	0	0	0	11	4	11	--	11	--
12.9994	Career Exploration.	0	0	0	0	0	0	--	0	--
12.9996	Certification/Licensure Review.	66	37	47	32	39	-15	-31.9%	-34	-51.5%
12.9998	Internships. (1.2 only)	0	37	0	0	12	0	--	0	--
13.0101	Education, General.	116	134	122	158	138	36	29.5%	42	36.2%
13.0201	Bilingual and Multilingual Education	0	0	1	0	0	-1	-100.0%	0	--
13.0501	Educational/Instructional Technology.	0	2	1	12	5	11	1100.0%	12	--
13.0901	Social and Philosophical Foundations of Education.	288	302	298	224	275	-74	-24.8%	-64	-22.2%
13.1001	Special Education and Teaching, General.	0	3	0	1	1	1	--	1	--
13.1202	Elementary Education and Teaching.	4	5	2	4	4	2	100.0%	0	0.0%
13.1209	Kindergarten/Preschool Education and Teaching	15	10	0	0	3	0	--	-15	-100.0%
13.1210	Early Childhood Education and Teaching.	108	87	84	167	113	83	98.8%	59	54.6%
13.1307	Health Teacher Education.	340	667	760	786	738	26	3.4%	446	131.2%
13.1314	Physical Education Teaching and Coaching.	0	0	1	18	6	17	1700.0%	18	--
13.1501	Teacher Assistant/Aide.	121	134	2	62	66	60	3000.0%	-59	-48.8%
13.9997	Topics.	73	4	5	3	4	-2	-40.0%	-70	-95.9%
13.9998	Internships.	0	10	8	0	6	-8	-100.0%	0	--
14.0101	Engineering, General.	25	22	15	22	20	7	46.7%	-3	-12.0%
14.1001	Electrical and Electronics Engineering	4	3	6	1	3	-5	-83.3%	-3	-75.0%
14.1101	Engineering Mechanics.	9	16	17	10	14	-7	-41.2%	1	11.1%
14.1201	Engineering Physics/Applied Physics.	8	13	4	26	14	22	550.0%	18	225.0%
14.4201	Mechatronics, Robotics, and Automation Engineering.	9	16	12	60	29	48	400.0%	51	566.7%
15.0000	Engineering Technology, General.	16	40	26	49	38	23	88.5%	33	206.3%
15.0101	Architectural Engineering Technology/Technician.	1	8	17	23	16	6	35.3%	22	2200.0%



Illinois Community College Board
Table B-13
STATEWIDE DUAL CREDIT COURSE ENROLLMENT BY 6-DIGIT CIP
FOR FISCAL YEARS 2015-2018

CIP	COURSE NAME	2015	2016	2017	FY 2016-2018		FY 2017-2018		FY 2015-2018	
					3-Year Average	Number	1-Year Difference	Percent	4-Year Difference	Percent
15.0201	Civil Engineering Technology/Technician.	0	23	15	13	17	-2	-13.3%	13	--
15.0303	Electrical, Electronic and Communications Engineering Technology/Technician.	344	301	252	230	261	-22	-8.7%	-114	-33.1%
15.0304	Laser and Optical Technology/Technician.	22	16	10	15	14	5	50.0%	-7	-31.8%
15.0305	Telecommunications Technology/Technician	10	0	0	0	0	0	--	-10	-100.0%
15.0310	Telecommunication Electronics Technology (Cross to 15.0305 for IPEDS)	0	0	0	0	0	0	--	0	--
15.0403	Electromechanical Technology/Electromechanical Engineering Technology.	0	1	3	4	3	1	33.3%	4	--
15.0405	Robotics Technology/Technician.	5	14	18	20	17	2	11.1%	15	300.0%
15.0410	Fluid Power Technology (Cross to 15.1103 for IPEDS)	2	7	1	2	3	1	100.0%	0	0.0%
15.0411	Automated Manufacturing Technology (Cross to 15.0499 for IPEDS)	88	49	111	113	91	2	1.8%	25	28.4%
15.0503	Energy Management and Systems Technology/Technician	0	2	0	0	1	0	--	0	--
15.0508	Hazardous Materials Management and Waste Technology/Technician.	0	0	0	8	3	8	--	8	--
15.0612	Industrial Technology/Technician	11	0	22	0	7	-22	-100.0%	-11	-100.0%
15.0613	Manufacturing Engineering Technology/Technician.	175	227	143	311	227	168	117.5%	136	77.7%
15.0701	Occupational Safety and Health Technology/Technician.	145	80	113	115	103	2	1.8%	-30	-20.7%
15.0702	Quality Control Technology/Technician.	78	76	110	75	87	-35	-31.8%	-3	-3.8%
15.0703	Industrial Safety Technology/Technician.	30	9	28	9	15	-19	-67.9%	-21	-70.0%
15.0805	Mechanical Engineering/Mechanical Technology/Technician.	103	126	151	156	144	5	3.3%	53	51.5%
15.0901	Mining Technology/Technician.	13	19	11	13	14	2	18.2%	0	0.0%
15.0903	Petroleum Technology/Technician.	0	0	0	1	0	1	--	1	--
15.1201	Computer Engineering Technology/Technician.	231	204	183	206	198	23	12.6%	-25	-10.8%
15.1203	Computer Hardware Technology/Technician.	60	93	99	78	90	-21	-21.2%	18	30.0%
15.1301	Drafting and Design Technology/Technician, General.	591	589	706	610	635	-96	-13.6%	19	3.2%
15.1302	CAD/CADD Drafting and/or Design Technology/Technician.	896	1,008	1,184	1,058	1,083	-126	-10.6%	162	18.1%
15.1303	Architectural Drafting and Architectural CAD/CADD.	68	63	79	96	79	17	21.5%	28	41.2%
15.1305	Electrical/Electronics Drafting and Electrical/Electronics CAD/CADD	22	7	0	0	2	0	--	-22	-100.0%
15.1306	Mechanical Drafting and Mechanical Drafting CAD/CADD.	21	14	22	23	20	1	4.5%	2	9.5%
15.1601	Nanotechnology.	31	34	36	22	31	-14	-38.9%	-9	-29.0%
15.9997	Topics.	81	124	152	120	132	-32	-21.1%	39	48.1%
15.9999	Engineering Technologies and Engineering-Related Fields, Other.	0	30	16	42	29	26	162.5%	42	--
16.0103	Language Interpretation and Translation	26	6	0	0	2	0	--	-26	-100.0%
16.0301	Chinese Language and Literature	12	9	1	0	3	-1	-100.0%	-12	-100.0%
16.0302	Japanese Language and Literature.	1	4	0	14	6	14	--	13	1300.0%
16.0501	German Language and Literature.	134	161	178	223	187	45	25.3%	89	66.4%
16.0901	French Language and Literature.	326	267	269	211	249	-58	-21.6%	-115	-35.3%
16.0902	Italian Language and Literature.	0	0	15	22	12	7	46.7%	22	--
16.0905	Spanish Language and Literature.	4,708	4,975	5,157	5,046	5,059	-111	-2.2%	338	7.2%
16.1101	Arabic Language and Literature	0	1	0	0	0	0	--	0	--
16.1203	Latin Language and Literature	1	1	0	0	0	0	--	-1	-100.0%
16.1601	American Sign Language (ASL).	0	4	7	2	4	-5	-71.4%	2	--
16.1603	Sign Language Interpretation and Translation.	32	36	45	42	41	-3	-6.7%	10	31.3%
16.9996	Certification/Licensure Review.	13	27	26	22	25	-4	-15.4%	9	69.2%
19.0101	Family and Consumer Sciences/Human Sciences, General.	0	0	930	1,154	695	224	24.1%	1,154	--
19.0401	Family Resource Management Studies, General	0	0	1	0	0	-1	-100.0%	0	--
19.0402	Consumer Economics.	425	515	2	3	173	1	50.0%	-422	-99.3%
19.0501	Foods, Nutrition, and Wellness Studies, General.	7	8	2	3	4	1	50.0%	-4	-57.1%
19.0504	Human Nutrition.	91	116	138	89	114	-49	-35.5%	-2	-2.2%
19.0706	Child Development.	0	10	14	12	12	-2	-14.3%	12	--
19.0708	Child Care and Support Services Management.	0	2	1	3	2	2	200.0%	3	--
19.0709	Child Care Provider/Assistant.	582	531	512	655	566	143	27.9%	73	12.5%
19.0901	Apparel and Textiles, General.	68	61	44	14	40	-30	-68.2%	-54	-79.4%
19.0902	Apparel and Textile Manufacture.	17	7	22	33	21	11	50.0%	16	94.1%
19.9997	Topics.	29	0	23	45	23	22	95.7%	16	55.2%
19.9998	Internships.	5	5	2	5	4	3	150.0%	0	0.0%



Illinois Community College Board
Table B-13
STATEWIDE DUAL CREDIT COURSE ENROLLMENT BY 6-DIGIT CIP
FOR FISCAL YEARS 2015-2018

CIP	COURSE NAME	2015	2016	2017	FY 2016-2018		FY 2017-2018		FY 2015-2018	
					3-Year Average	Number	1-Year Difference	Percent	4-Year Difference	Percent
22.0302	Legal Assistant/Paralegal.	0	2	2	2	2	0	0.0%	2	--
23.0101	English Language and Literature, General.	193	268	241	230	246	-11	-4.6%	37	19.2%
23.1301	Writing, General.	15,575	16,671	17,278	19,082	17,677	1,804	10.4%	3,507	22.5%
23.1302	Creative Writing.	33	24	45	49	39	4	8.9%	16	48.5%
23.1303	Professional, Technical, Business, and Scientific Writing.	49	85	101	229	138	128	126.7%	180	367.3%
23.1304	Rhetoric and Composition.	3,541	3,710	3,967	4,078	3,918	111	2.8%	537	15.2%
23.1402	American Literature (United States).	459	531	567	693	597	126	22.2%	234	51.0%
23.1404	English Literature (British and Commonwealth).	31	189	103	244	179	141	136.9%	213	687.1%
23.9997	Topics.	24	0	24	0	8	-24	-100.0%	-24	-100.0%
24.0102	General Studies.	1,167	926	966	1,262	1,051	296	30.6%	95	8.1%
24.0103	Humanities/Humanistic Studies.	245	459	355	351	388	-4	-1.1%	106	43.3%
24.0105	Orientation Courses (Cross to 24.0199 for IPEDS)	900	1,060	1,087	938	1,028	-149	-13.7%	38	4.2%
24.0197	Critical Thinking, Analytic Thinking, Methods of Inquiry and/or Practical Thinking	0	0	1	0	0	-1	-100.0%	0	--
24.0198	Internships.	48	44	115	118	92	3	2.6%	70	145.8%
24.0199	Topics.	0	2	3	0	2	-3	-100.0%	0	--
24.9997	Critical Thinking, Analytic Thinking, Methods of Inquiry and/or Practical Thinking	17	54	0	13	22	13	--	-4	-23.5%
26.0101	Biology/Biological Sciences, General.	1,764	2,549	2,656	2,650	2,618	-6	-0.2%	886	50.2%
26.0301	Botany/Plant Biology.	8	13	9	8	10	-1	-11.1%	0	0.0%
26.0403	Anatomy.	942	1,006	1,332	1,188	1,175	-144	-10.8%	246	26.1%
26.0502	Microbiology, General.	34	36	53	19	36	-34	-64.2%	-15	-44.1%
26.0701	Zoology/Animal Biology.	13	17	97	70	61	-27	-27.8%	57	438.5%
26.0801	Genetics, General.	4	3	5	1	3	-4	-80.0%	-3	-75.0%
26.1001	Pharmacology.	20	30	32	26	29	-6	-18.8%	6	30.0%
26.1301	Ecology.	132	75	175	173	141	-2	-1.1%	41	31.1%
26.1302	Marine Biology and Biological Oceanography.	109	103	99	94	99	-5	-5.1%	-15	-13.8%
26.1305	Environmental Biology.	513	310	323	263	299	-60	-18.6%	-250	-48.7%
26.9997	Topics.	2	0	0	0	0	0	--	-2	-100.0%
27.0101	Mathematics, General.	5,478	6,454	6,674	6,545	6,558	-129	-1.9%	1,067	19.5%
27.0103	Analysis and Functional Analysis.	67	58	69	81	69	12	17.4%	14	20.9%
27.0199	Mathematics, Other	2	0	0	0	0	0	--	-2	-100.0%
27.0301	Applied Mathematics, General.	1,145	1,292	1,162	1,503	1,319	341	29.3%	358	31.3%
27.0501	Statistics, General.	1,407	1,724	1,967	2,449	2,047	482	24.5%	1,042	74.1%
27.9997	Topics.	0	0	1	0	0	-1	-100.0%	0	--
30.0101	Biological and Physical Sciences.	59	77	95	75	82	-20	-21.1%	16	27.1%
30.0197	Topics.	0	0	18	32	17	14	77.8%	32	--
31.0101	Parks, Recreation, and Leisure Studies	1	0	3	0	1	-3	-100.0%	-1	-100.0%
31.0501	Health and Physical Education/Fitness, General.	2,384	2,456	2,887	2,368	2,570	-519	-18.0%	-16	-0.7%
31.0504	Sport and Fitness Administration/Management.	4	7	1	1	3	0	0.0%	-3	-75.0%
32.0107	Career Exploration/Awareness Skills.	0	0	16	64	27	48	300.0%	64	--
36.0109	Aircraft Pilot (Private).	15	18	15	13	15	-2	-13.3%	-2	-13.3%
38.0101	Philosophy.	175	272	290	235	266	-55	-19.0%	60	34.3%
38.0102	Logic.	96	150	108	123	127	15	13.9%	27	28.1%
38.0103	Ethics.	103	178	178	227	194	49	27.5%	124	120.4%
38.0201	Religion/Religious Studies.	114	144	256	323	241	67	26.2%	209	183.3%
40.0101	Physical Sciences.	10	37	15	19	24	4	26.7%	9	90.0%
40.0201	Astronomy.	87	153	124	99	125	-25	-20.2%	12	13.8%
40.0401	Atmospheric Sciences and Meteorology, General.	8	7	20	18	15	-2	-10.0%	10	125.0%
40.0501	Chemistry, General.	764	842	749	646	746	-103	-13.8%	-118	-15.4%
40.0503	Inorganic Chemistry.	256	219	259	230	236	-29	-11.2%	-26	-10.2%
40.0504	Organic Chemistry.	18	24	29	53	35	24	82.8%	35	194.4%
40.0599	Chemistry, Other.	16	22	11	11	15	0	0.0%	-5	-31.3%
40.0601	Geology/Earth Science, General.	543	587	639	555	594	-84	-13.1%	12	2.2%
40.0607	Oceanography, Chemical and Physical.	58	38	64	64	55	0	0.0%	6	10.3%



Illinois Community College Board
Table B-13
STATEWIDE DUAL CREDIT COURSE ENROLLMENT BY 6-DIGIT CIP
FOR FISCAL YEARS 2015-2018

CIP	COURSE NAME	2015	2016	2017	FY 2016-2018		FY 2017-2018		FY 2015-2018	
					2018	3-Year Average Number	Number	Percent	Number	Percent
40.0801	Physics, General.	544	607	512	378	499	-134	-26.2%	-166	-30.5%
40.9997	Topics.	0	0	0	1	0	1	--	1	--
42.0101	Psychology, General.	3,851	3,047	3,404	3,676	3,376	272	8.0%	-175	-4.5%
42.2701	Cognitive Psychology and Psycholinguistics.	34	74	52	22	49	-30	-57.7%	-12	-35.3%
42.2703	Developmental and Child Psychology.	376	412	335	432	393	97	29.0%	56	14.9%
42.2707	Social Psychology.	14	25	77	33	45	-44	-57.1%	19	135.7%
42.2806	Educational Psychology.	3	10	7	5	7	-2	-28.6%	2	66.7%
43.0102	Corrections.	174	111	159	129	133	-30	-18.9%	-45	-25.9%
43.0103	Criminal Justice/Law Enforcement Administration.	386	267	443	516	409	73	16.5%	130	33.7%
43.0104	Criminal Justice/Safety Studies.	203	236	294	215	248	-79	-26.9%	12	5.9%
43.0106	Forensic Science and Technology.	5	1	52	48	34	-4	-7.7%	43	860.0%
43.0107	Criminal Justice/Police Science.	798	1,089	653	1,157	966	504	77.2%	359	45.0%
43.0114	Law Enforcement Investigation and Interviewing.	0	0	0	3	1	3	--	3	--
43.0199	Corrections and Criminal Justice, Other.	0	1	45	32	26	-13	-28.9%	32	--
43.0201	Fire Prevention and Safety Technology/Technician.	140	107	100	153	120	53	53.0%	13	9.3%
43.0202	Fire Services Administration.	17	10	16	13	13	-3	-18.8%	-4	-23.5%
43.0203	Fire Science/Fire-fighting.	397	500	403	574	492	171	42.4%	177	44.6%
43.0204	Fire Systems Technology.	0	0	0	5	2	5	--	5	--
43.0301	Homeland Security.	1	1	3	0	1	-3	-100.0%	-1	-100.0%
43.9994	Career Exploration.	127	114	101	76	97	-25	-24.8%	-51	-40.2%
43.9997	Topics.	38	11	5	7	8	2	40.0%	-31	-81.6%
43.9998	Internship.	12	5	18	12	12	-6	-33.3%	0	0.0%
44.0701	Social Work.	1	0	1	53	18	52	5200.0%	52	5200.0%
45.0101	Social Sciences, General.	123	130	25	26	60	1	4.0%	-97	-78.9%
45.0201	Anthropology.	24	116	37	157	103	120	324.3%	133	554.2%
45.0301	Archeology	0	0	1	0	0	-1	-100.0%	0	--
45.0401	Criminology.	36	118	26	62	69	36	138.5%	26	72.2%
45.0501	Demography and Population Studies.	0	20	23	20	21	-3	-13.0%	20	--
45.0601	Economics, General.	500	498	518	778	598	260	50.2%	278	55.6%
45.0701	Geography.	159	96	147	164	136	17	11.6%	5	3.1%
45.0901	International Relations and Affairs.	93	31	9	76	39	67	744.4%	-17	-18.3%
45.1001	Political Science and Government, General.	1,813	1,212	1,244	1,335	1,264	91	7.3%	-478	-26.4%
45.1101	Sociology.	1,211	1,131	1,099	1,320	1,183	221	20.1%	109	9.0%
45.9997	Topics.	9	20	5	16	14	11	220.0%	7	77.8%
46.0000	Construction Trades, General.	0	22	35	56	38	21	60.0%	56	--
46.0201	Carpentry/Carpenter.	459	433	500	464	466	-36	-7.2%	5	1.1%
46.0299	Carpenter/Construction, Other.	52	58	66	40	55	-26	-39.4%	-12	-23.1%
46.0302	Electrician.	2	10	30	10	17	-20	-66.7%	8	400.0%
46.0401	Building/Property Maintenance.	32	62	79	88	76	9	11.4%	56	175.0%
46.0403	Building/Home/Construction Inspection/Inspector.	6	1	11	23	12	12	109.1%	17	283.3%
47.0103	Communications Systems Installation and Repair Technology.	8	36	9	9	18	0	0.0%	1	12.5%
47.0104	Computer Installation and Repair Technology/Technician.	441	417	530	389	445	-141	-26.6%	-52	-11.8%
47.0105	Industrial Electronics Technology/Technician.	0	12	27	24	21	-3	-11.1%	24	--
47.0199	Electrical/Electronics Maintenance and Repair Technology, Other.	93	68	60	58	62	-2	-3.3%	-35	-37.6%
47.0201	Heating, Air Conditioning, Ventilation and Refrigeration Maintenance Technology/Technician.	40	44	38	36	39	-2	-5.3%	-4	-10.0%
47.0303	Industrial Mechanics and Maintenance Technology	22	15	10	0	8	-10	-100.0%	-22	-100.0%
47.0603	Autobody/Collision and Repair Technology/Technician.	418	297	245	269	270	24	9.8%	-149	-35.6%
47.0604	Automobile/Automotive Mechanics Technology/Technician.	1,539	1,528	1,664	1,682	1,625	18	1.1%	143	9.3%
47.0605	Diesel Mechanics Technology/Technician.	58	88	58	54	67	-4	-6.9%	-4	-6.9%
47.0606	Small Engine Mechanics and Repair Technology/Technician.	71	25	37	22	28	-15	-40.5%	-49	-69.0%
47.0609	Avionics Maintenance Technology/Technician	15	36	0	0	12	0	--	-15	-100.0%
47.9996	Certification/Licensure Review.	0	1	0	0	0	0	--	0	--
47.9997	Topics. (1.2 only)	24	16	36	0	17	-36	-100.0%	-24	-100.0%



Illinois Community College Board
Table B-13
STATEWIDE DUAL CREDIT COURSE ENROLLMENT BY 6-DIGIT CIP
FOR FISCAL YEARS 2015-2018

CIP	COURSE NAME	2015	2016	2017	FY 2016-2018		FY 2017-2018		FY 2015-2018	
					3-Year Average	Number	Number	Percent	Number	Percent
47.9999	Mechanic and Repair Technologies/Technicians, Other.	0	21	21	1	14	-20	-95.2%	1	--
48.0501	Machine Tool Technology/Machinist.	32	54	71	87	71	16	22.5%	55	171.9%
48.0503	Machine Shop Technology/Assistant.	668	835	708	606	716	-102	-14.4%	-62	-9.3%
48.0508	Welding Technology/Welder.	2,728	2,777	2,959	2,833	2,856	-126	-4.3%	105	3.8%
48.0510	Computer Numerically Controlled (CNC) Machinist Technology/CNC Machinist.	0	0	0	18	6	18	--	18	--
48.0520	Numerical Control (NOT CNC) (Cross to 48.0599 for IPEDS)	38	43	47	32	41	-15	-31.9%	-6	-15.8%
48.0702	Furniture Design and Manufacturing	0	2	0	0	1	0	--	0	--
48.9995	Supervised Independent Study. (1.2 only)	8	0	11	0	4	-11	-100.0%	-8	-100.0%
48.9997	Topics. (1.2 only)	8	8	12	19	13	7	58.3%	11	137.5%
49.0102	Airline/Commercial/Professional Pilot and Flight Crew.	11	9	12	8	10	-4	-33.3%	-3	-27.3%
50.0101	Visual and Performing Arts, General.	11	25	17	11	18	-6	-35.3%	0	0.0%
50.0201	Crafts/Craft Design, Folk Art and Artisanry	0	0	6	0	2	-6	-100.0%	0	--
50.0301	Dance, General	1	0	0	0	0	0	--	-1	-100.0%
50.0302	Ballet	1	0	0	0	0	0	--	-1	-100.0%
50.0401	Design and Visual Communications, General.	307	459	458	587	501	129	28.2%	280	91.2%
50.0402	Commercial and Advertising Art.	0	0	8	2	3	-6	-75.0%	2	--
50.0406	Commercial Photography.	522	641	939	1,011	864	72	7.7%	489	93.7%
50.0409	Graphic Design.	0	1	0	1	1	1	--	1	--
50.0501	Drama and Dramatics/Theatre Arts, General.	103	99	157	170	142	13	8.3%	67	65.0%
50.0502	Technical Theatre/Theatre Design and Technology	1	1	1	0	1	-1	-100.0%	-1	-100.0%
50.0506	Acting.	9	49	25	46	40	21	84.0%	37	411.1%
50.0599	Dramatic/Theatre Arts and Stagecraft, Other	1	0	3	0	1	-3	-100.0%	-1	-100.0%
50.0601	Film/Cinema/Video Studies.	5	12	6	30	16	24	400.0%	25	500.0%
50.0602	Cinematography and Film/Video Production.	165	176	145	168	163	23	15.9%	3	1.8%
50.0605	Photography.	8	13	184	118	105	-66	-35.9%	110	1375.0%
50.0701	Art/Art Studies, General.	289	442	472	453	456	-19	-4.0%	164	56.7%
50.0703	Art History, Criticism and Conservation.	164	141	101	154	132	53	52.5%	-10	-6.1%
50.0705	Drawing.	49	21	29	46	32	17	58.6%	-3	-6.1%
50.0708	Painting.	0	0	1	4	2	3	300.0%	4	--
50.0709	Sculpture.	0	1	0	1	1	1	--	1	--
50.0711	Ceramic Arts and Ceramics.	1	10	62	39	37	-23	-37.1%	38	3800.0%
50.0901	Music, General	3	5	5	0	3	-5	-100.0%	-3	-100.0%
50.0902	Music History, Literature, and Theory.	645	770	984	1,124	959	140	14.2%	479	74.3%
50.0903	Music Performance, General.	150	154	205	134	164	-71	-34.6%	-16	-10.7%
50.0904	Music Theory and Composition.	56	56	87	48	64	-39	-44.8%	-8	-14.3%
50.9997	Topics.	8	21	23	0	15	-23	-100.0%	-8	-100.0%
51.0000	Health Services/Allied Health/Health Sciences, General.	316	424	397	680	500	283	71.3%	364	115.2%
51.0001	Health and Wellness, General.	0	0	9	9	6	0	0.0%	9	--
51.0707	Health Information/Medical Records Technology/Technician.	476	446	367	404	406	37	10.1%	-72	-15.1%
51.0708	Medical Transcription/Transcriptionist.	43	60	97	107	88	10	10.3%	64	148.8%
51.0710	Medical Office Assistant/Specialist.	1,297	1,423	1,692	2,027	1,714	335	19.8%	730	56.3%
51.0801	Medical/Clinical Assistant.	43	60	68	52	60	-16	-23.5%	9	20.9%
51.0805	Pharmacy Technician/Assistant.	4	2	0	0	1	0	--	-4	-100.0%
51.0808	Veterinary/Animal Health Technology/Technician and Veterinary Assistant.	0	0	71	72	48	1	1.4%	72	--
51.0810	Emergency Care Attendant (EMT Ambulance).	269	229	211	205	215	-6	-2.8%	-64	-23.8%
51.0902	Electrocardiograph Technology/Technician	0	0	1	0	0	-1	-100.0%	0	--
51.0904	Emergency Medical Technology/Technician (EMT Paramedic).	182	217	323	452	331	129	39.9%	270	148.4%
51.0907	Medical Radiologic Technology/Science - Radiation Therapist.	0	1	0	1	1	1	--	1	--
51.0908	Respiratory Care Therapy/Therapist.	26	40	58	150	83	92	158.6%	124	476.9%
51.0913	Athletic Training/Trainer.	1	2	0	11	4	11	--	10	1000.0%
51.1004	Clinical/Medical Laboratory Technician.	2	1	17	31	16	14	82.4%	29	1450.0%
51.2201	Public Health, General.	47	6	1	0	2	-1	-100.0%	-47	-100.0%
51.3104	Dietitian Assistant.	36	35	26	29	30	3	11.5%	-7	-19.4%



Illinois Community College Board
Table B-13
STATEWIDE DUAL CREDIT COURSE ENROLLMENT BY 6-DIGIT CIP
FOR FISCAL YEARS 2015-2018

CIP	COURSE NAME	2015	2016	2017	FY 2016-2018		FY 2017-2018		FY 2015-2018	
					3-Year Average	Number	1-Year Difference	Percent	4-Year Difference	Percent
51.3501	Massage Therapy/Therapeutic Massage.	0	0	0	14	5	14	--	14	--
51.3801	Registered Nursing/Registered Nurse.	43	0	0	1	0	1	--	-42	-97.7%
51.3812	Perioperative/Operating Room and Surgical Nurse/Nursing.	0	1	0	0	0	0	--	0	--
51.3901	Licensed Practical/Vocational Nurse Training.	12	11	20	16	16	-4	-20.0%	4	33.3%
51.3902	Nursing Assistant/Aide and Patient Care Assistant/Aide.	2,264	2,301	2,678	2,697	2,559	19	0.7%	433	19.1%
51.9994	Career Exploration.	326	385	410	592	462	182	44.4%	266	81.6%
51.9995	Supervised Independent Study.	0	10	0	0	3	0	--	0	--
51.9997	Topics. (1.2 only)	0	23	23	49	32	26	113.0%	49	--
51.9998	Internships. (1.2 only)	6	6	13	2	7	-11	-84.6%	-4	-66.7%
51.9999	Health Professions and Related Clinical Sciences, Other.	372	354	375	387	372	12	3.2%	15	4.0%
52.0101	Business/Commerce, General.	657	765	811	875	817	64	7.9%	218	33.2%
52.0201	Business Administration and Management, General.	62	82	96	127	102	31	32.3%	65	104.8%
52.0203	Logistics, Materials, and Supply Chain Management	0	0	23	0	8	-23	-100.0%	0	--
52.0301	Accounting.	502	390	316	225	310	-91	-28.8%	-277	-55.2%
52.0302	Accounting Technology/Technician and Bookkeeping.	652	771	693	840	768	147	21.2%	188	28.8%
52.0401	Administrative Assistant and Secretarial Science, General.	1,391	1,193	1,204	1,009	1,135	-195	-16.2%	-382	-27.5%
52.0407	Business/Office Automation/Technology/Data Entry.	2,686	2,475	2,500	2,091	2,355	-409	-16.4%	-595	-22.2%
52.0408	General Office Occupations and Clerical Services.	2,172	2,481	1,923	2,038	2,147	115	6.0%	-134	-6.2%
52.0409	Parts, Warehousing, and Inventory Management Operations	31	3	0	0	1	0	--	-31	-100.0%
52.0411	Customer Service Support/Call Center/Teleservice Operation.	3	24	11	25	20	14	127.3%	22	733.3%
52.0701	Entrepreneurship/Entrepreneurial Studies.	345	506	775	988	756	213	27.5%	643	186.4%
52.0703	Small Business Administration/Management.	47	86	115	140	114	25	21.7%	93	197.9%
52.0801	Finance, General	54	32	32	0	21	-32	-100.0%	-54	-100.0%
52.0803	Banking and Financial Support Services.	14	1	22	99	41	77	350.0%	85	607.1%
52.0807	Investments and Securities (Cross to 52.0899 for IPEDS)	5	15	5	0	7	-5	-100.0%	-5	-100.0%
52.0903	Tourism and Travel Services Management.	0	0	0	9	3	9	--	9	--
52.0904	Hotel/Motel Administration/Management	0	0	20	21	14	1	5.0%	21	--
52.0905	Restaurant/Food Services Management	34	21	0	0	7	0	--	-34	-100.0%
52.1001	Human Resources Management/Personnel Administration, General	0	1	0	0	0	0	--	0	--
52.1003	Organizational Behavior Studies.	7	28	1	20	16	19	1900.0%	13	185.7%
52.1101	International Business/Trade/Commerce.	2	9	9	1	6	-8	-88.9%	-1	-50.0%
52.1401	Marketing/Marketing Management, General.	175	229	331	522	361	191	57.7%	347	198.3%
52.1402	Marketing Research.	15	19	27	20	22	-7	-25.9%	5	33.3%
52.1803	Retailing and Retail Operations.	0	17	0	0	6	0	--	0	--
52.1804	Selling Skills and Sales Operations.	3	18	7	31	19	24	342.9%	28	933.3%
52.1902	Fashion Merchandising.	38	66	61	62	63	1	1.6%	24	63.2%
52.1909	Special Products Marketing Operations	0	0	1	0	0	-1	-100.0%	0	--
52.2001	Construction Management	0	1	0	0	0	0	--	0	--
52.9994	Career Exploration.	289	168	229	295	231	66	28.8%	6	2.1%
52.9995	Supervised Independent Study. (1.2 only)	0	0	1	0	0	-1	-100.0%	0	--
52.9996	Certification/Licensure Review.	0	0	16	10	9	-6	-37.5%	10	--
52.9997	Topics.	10	55	78	116	83	38	48.7%	106	1060.0%
52.9998	Internships.	19	10	17	19	15	2	11.8%	0	0.0%
52.9999	Business, Management, Marketing, and Related Support Services, Other.	4	5	2	2	3	0	0.0%	-2	-50.0%
54.0101	History, General.	799	729	702	850	760	148	21.1%	51	6.4%
54.0102	American History (United States).	2,952	3,409	3,860	4,386	3,885	526	13.6%	1,434	48.6%
54.0103	European History.	0	1	0	1	1	1	--	1	--
54.0106	Asian History.	9	15	33	55	34	22	66.7%	46	511.1%
54.9996	Certification/Licensure Review.	<u>51</u>	<u>71</u>	<u>25</u>	<u>77</u>	<u>58</u>	<u>52</u>	<u>208.0%</u>	<u>26</u>	<u>51.0%</u>
TOTALS		99,343	105,361	111,643	117,672	111,559	6,029	5.4%	18,329	18.5%
Pure										
Minimum		0	0	0	0	0	-519	-100.0%	-595	-100.0%



Illinois Community College Board
 Table B-13
 STATEWIDE DUAL CREDIT COURSE ENROLLMENT BY 6-DIGIT CIP
 FOR FISCAL YEARS 2015-2018

<u>CIP</u>	<u>COURSE NAME</u>	<u>2015</u>	<u>2016</u>	<u>2017</u>	<u>2018</u>	FY 2016-2018		FY 2017-2018		FY 2015-2018	
						3-Year Average	Number	1-Year Difference	Percent	4-Year Difference	Percent
	Maximum	15,575	16,671	17,278	19,082	17,677	1,804	5200.0%	3,507	5200.0%	
	Median	22	24	26	31	29	0	-0.1%	1	1.5%	
	Standard Deviation	1,009	1,078	1,124	1,207	1,135	129	387.9%	259	480.4%	
	Average	271	287	304	321	304	16	52.6%	50	104.9%	

Includes only Transfer courses and Career and Technical Education courses
 SOURCE OF DATA: ICCB Centralized Data System--Annual Course (AC) Data



Illinois Community College Board
Table B-14
STATEWIDE DUAL CREDIT COURSE ENROLLMENT BY 2-DIGIT CIP
FOR FISCAL YEARS 2015-2018

CIP	COURSE NAME	2015	2016	2017	2018	FY 2016-2018	FY 2017-2018	FY 2015-2018		
						3-Year Average	1-Year Difference	4-Year Difference	Number	Percent
01.	Agriculture, Agriculture Operations, and Related Sciences	1,549	1,483	1,642	1,696	1,607	54	3.3%	147	9.5%
03.	Natural Resources and Conservation	25	22	14	38	25	24	171.4%	13	52.0%
04.	Architecture and Related Services	8	20	34	38	31	4	11.8%	30	375.0%
05.	Area, Ethnic, Cultural, Gender, and Group Studies	101	37	51	174	87	123	241.2%	73	72.3%
09.	Communication, Journalism and Related Programs	515	387	600	431	473	-169	-28.2%	-84	-16.3%
10.	Communications, Technologies/Technicians and Support Services	1,005	931	1,021	1,091	1,014	70	6.9%	86	8.6%
11.	Computer and Information Sciences and Support Services	5,624	6,184	6,413	6,028	6,208	-385	-6.0%	404	7.2%
12.	Personal and Culinary Services	2,088	2,285	2,536	2,686	2,502	150	5.9%	598	28.6%
13.	Education	1,065	1,358	1,284	1,435	1,359	151	11.8%	370	34.7%
14.	Engineering	55	70	54	119	81	65	120.4%	64	116.4%
15.	Engineering Technologies and Engineering-Related Fields	3,044	3,164	3,508	3,412	3,361	-96	-2.7%	368	12.1%
16.	Foreign Languages, Literatures, and Linguistics	5,253	5,491	5,698	5,582	5,590	-116	-2.0%	329	6.3%
19.	Family and Consumer Sciences/Human Sciences	1,224	1,255	1,691	2,016	1,654	325	19.2%	792	64.7%
22.	Legal Professions and Studies	0	2	2	2	2	0	0.0%	2	--
23.	English Language and Literature/Letters	19,905	21,478	22,326	24,605	22,803	2,279	10.2%	4,700	23.6%
24.	Liberal Arts and Sciences, General Studies and Humanities	2,377	2,545	2,527	2,682	2,585	155	6.1%	305	12.8%
26.	Biological and Biomedical Sciences	3,541	4,142	4,781	4,492	4,472	-289	-6.0%	951	26.9%
27.	Mathematics and Statistics	8,099	9,528	9,873	10,578	9,993	705	7.1%	2,479	30.6%
30.	Multi/Interdisciplinary Studies	59	77	113	107	99	-6	-5.3%	48	81.4%
31.	Parks, Recreation, Leisure and Fitness Studies	2,389	2,463	2,891	2,369	2,574	-522	-18.1%	-20	-0.8%
32.	Basic Skills and Developmental/Remedial Education	0	0	16	64	27	48	300.0%	64	--
36.	Leisure and Recreational Activities	0	0	0	13	4	13	--	13	--
38.	Philosophy and Religious Studies	488	744	832	908	828	76	9.1%	420	86.1%
40.	Physical Sciences	2,304	2,536	2,422	2,074	2,344	-348	-14.4%	-230	-10.0%
42.	Psychology	4,278	3,568	3,875	4,168	3,870	293	7.6%	-110	-2.6%
43.	Homeland Security, Law Enforcement, Firefighting and Related Protective Services	2,298	2,453	2,292	2,940	2,562	648	28.3%	642	27.9%
44.	Public Administration and Social Services Professions	1	0	1	53	18	52	5200.0%	52	5200.0%
45.	Social Sciences	3,968	3,372	3,134	3,954	3,487	820	26.2%	-14	-0.4%
46.	Construction Trades	551	586	721	681	663	-40	-5.5%	130	23.6%
47.	Mechanics and Repair Technologies/Technicians	2,729	2,604	2,735	2,544	2,628	-191	-7.0%	-185	-6.8%
48.	Precision Production	3,482	3,719	3,808	3,595	3,707	-213	-5.6%	113	3.2%
49.	Transportation and Materials Moving	26	27	27	8	21	-19	-70.4%	-18	-69.2%
50.	Visual and Performing Arts	2,499	3,097	3,918	4,147	3,721	229	5.8%	1,648	65.9%
51.	Health Professions and Related Programs	5,765	6,037	6,857	7,988	6,961	1,131	16.5%	2,223	38.6%
52.	Business Management, Marketing, and Related Supportive Services	9,217	9,471	9,326	9,585	9,461	259	2.8%	368	4.0%
54.	History	<u>3,811</u>	<u>4,225</u>	<u>4,620</u>	<u>5,369</u>	<u>4,738</u>	<u>749</u>	<u>16.2%</u>	<u>1,558</u>	<u>40.9%</u>
	TOTALS	99,343	105,361	111,643	117,672	111,559	6,029	5.4%	18,329	18.5%
	Pure									
	Minimum	0	0	0	2	2	-522	-70.4%	-230	-69.2%
	Maximum	19,905	21,478	22,326	24,605	22,803	2,279	5200.0%	4,700	5200.0%
	Median	2,193	2,369	2,357	2,222	2,423	53	6.1%	122	23.6%
	Standard Deviation	3,759	4,054	4,202	4,569	4,271	501	877.7%	962	901.7%
	Average	2,760	2,927	3,101	3,269	3,099	167	173.0%	509	192.3%

Includes only Transfer courses and Career and Technical Education courses
SOURCE OF DATA: ICCB Centralized Data System--Annual Course (AC) Data



Illinois Community College Board
Table B-15
STATEWIDE DUAL CREDIT COURSE ENROLLMENT BY CAREER CLUSTER
FOR FISCAL YEARS 2015-2018

Career Clusters Code Title					FY 2016-2018 3-Year Average	FY 2017-2018 1-Year Difference		FY 2015-2018 4-Year Difference	
	2015	2016	2017	2018	Number	Number	Percent	Number	Percent
01 Agriculture, Food & Natural Resources	1,480	1,457	1,581	1,664	1,567	83	5.2%	184	12.4%
02 Architecture & Construction	659	710	860	870	813	10	1.2%	211	32.0%
03 Arts, Audio/Video Technology & Communications	23,184	24,898	26,858	29,090	26,949	2,232	8.3%	5,906	25.5%
04 Business Management & Administration	7,712	8,039	7,909	7,682	7,877	-227	-2.9%	-30	-0.4%
05 Education & Training	11,364	12,512	13,487	14,045	13,348	558	4.1%	2,681	23.6%
06 Finance	1,227	1,209	1,068	1,164	1,147	96	9.0%	-63	-5.1%
07 Government & Public Administration	2,081	1,332	1,394	1,535	1,420	141	10.1%	-546	-26.2%
08 Health Science	4,843	4,959	5,779	6,370	5,703	591	10.2%	1,527	31.5%
09 Hospitality & Tourism	767	951	1,337	1,571	1,286	234	17.5%	804	104.8%
10 Human Services	6,148	5,382	5,564	5,992	5,646	428	7.7%	-156	-2.5%
11 Information Technology	5,228	5,698	5,853	5,599	5,717	-254	-4.3%	371	7.1%
12 Law, Public Safety, Corrections & Security	2,121	2,325	2,170	2,842	2,446	672	31.0%	721	34.0%
13 Manufacturing	6,630	6,934	7,411	6,767	7,037	-644	-8.7%	137	2.1%
14 Marketing	247	349	452	636	479	184	40.7%	389	157.5%
15 Science, Technology, Engineering & Mathematics	20,070	22,840	23,880	25,371	24,030	1,491	6.2%	5,301	26.4%
16 Transportation, Distribution & Logistics	2,112	1,983	2,039	2,035	2,019	-4	-0.2%	-77	-3.6%
17 Unknown	<u>3,470</u>	<u>3,783</u>	<u>4,001</u>	<u>4,439</u>	<u>4,074</u>	<u>438</u>	<u>10.9%</u>	<u>969</u>	<u>27.9%</u>
TOTALS	99,343	105,361	111,643	117,672	111,559	6,029	5.4%	18,329	18.5%
Pure									
Minimum	247	349	452	636	479	-644	-8.7%	-546	-26.2%
Maximum	23,184	24,898	26,858	29,090	26,949	2,232	40.7%	5,906	157.5%
Median	3,470	3,783	4,001	4,439	4,074	184	7.7%	371	23.6%
Standard Deviation	6,666.3	7,392.6	7,864.5	8,393.9	7,879.6	671.3	12.2%	1,863.5	43.9%
Average	5,844	6,198	6,567	6,922	6,562	355	8.6%	1,078	26.3%

Includes only Transfer courses and Career and Technical Education courses
The Career Cluster brand is a registered trademark of Advance CTE
SOURCE OF DATA: ICCB Centralized Data System--Annual Course (AC) Data

Illinois Community College Board

Table B-16

DUAL CREDIT COURSE ENROLLMENT BY INSTRUCTIONAL SITE AND BY COLLEGE
FISCAL YEAR 2018



Dist. No. District/College	Main College Campus	High School Campus	Off Campus College Facility	Online/ Internet	Distance Learning	Other/ Unknown Location	Total
503 Black Hawk	18	2,322	422	325	0	7	3,094
518 Carl Sandburg	180	1,326	140	293	0	0	1,939
508 City Colleges of Chicago	(16)	(0)	(3,865)	(0)	(0)	(2,681)	(6,562)
02 Harold Washington	1	0	76	0	0	1,442	1,519
04 Harry S Truman	0	0	178	0	0	197	375
01 Kennedy-King	0	0	412	0	0	75	487
03 Malcolm X	0	0	605	0	0	51	656
05 Olive-Harvey	15	0	13	0	0	885	913
06 Richard J. Daley	0	0	1,284	0	0	21	1,305
07 Wilbur Wright	0	0	1,297	0	0	10	1,307
502 College of DuPage	0	5,003	2,253	0	0	295	7,551
532 College of Lake County	34	1,462	256	11	0	263	2,026
507 Danville Area	1,661	719	126	0	0	20	2,526
509 Elgin	1,477	0	46	15	0	47	1,585
512 Harper	358	4,222	0	0	0	0	4,580
540 Heartland	50	2,154	0	30	8	0	2,242
519 Highland	191	1,009	0	6	0	333	1,539
514 Illinois Central	478	4,086	0	1,413	0	369	6,346
529 Illinois Eastern	(362)	(3,943)	(64)	(82)	(0)	(133)	(4,584)
04 Frontier	107	2,208	0	76	0	113	2,504
01 Lincoln Trail	103	473	49	3	0	0	628
02 Olney Central	118	554	10	1	0	0	683
03 Wabash Valley	34	708	5	2	0	20	769
513 Illinois Valley	0	1,762	0	89	0	0	1,851
530 John A. Logan	167	1,652	293	6	0	0	2,118
539 John Wood	0	478	112	0	0	0	590
525 Joliet Junior	0	6,803	0	0	0	0	6,803
520 Kankakee	0	0	0	0	0	941	941
501 Kaskaskia	120	4,780	187	0	0	0	5,087
523 Kishwaukee	390	195	0	0	0	0	585
517 Lake Land	0	3,808	0	0	0	0	3,808
536 Lewis and Clark	0	8,909	0	0	0	0	8,909
526 Lincoln Land	0	2,894	0	0	0	474	3,368
528 McHenry County	157	2,216	0	0	0	0	2,373
524 Moraine Valley	0	3,192	0	0	0	0	3,192
527 Morton	0	337	0	0	0	0	337
535 Oakton	0	1,466	0	0	0	52	1,518
505 Parkland	259	1,745	87	186	0	0	2,277
515 Prairie State	0	897	0	0	0	0	897
521 Rend Lake	308	2,112	270	101	0	7	2,798
537 Richland	751	854	113	23	0	0	1,741
511 Rock Valley	3,212	5	60	87	3	0	3,367
506 Sauk Valley	724	851	0	212	0	0	1,787
531 Shawnee	0	966	0	0	0	0	966
510 South Suburban	0	2,167	0	0	0	0	2,167
533 Southeastern Illinois	213	858	0	364	25	37	1,497
522 Southwestern Illinois	3,284	3,987	426	50	0	46	7,793
534 Spoon River	45	273	95	0	2	309	724
504 Triton	86	1,286	0	0	0	8	1,380
516 Waubensee	<u>224</u>	<u>3,098</u>	<u>821</u>	<u>0</u>	<u>0</u>	<u>81</u>	<u>4,224</u>
TOTALS	14,765	83,837	9,636	3,293	38	6,103	117,672

SOURCE OF DATA: ICCB Centralized Data System--Annual Course (AC) Data



Illinois Community College Board

Table C-1

FISCAL YEAR 2017 GRADUATING DUAL CREDIT (DC) STUDENTS
ENROLLING IN THE SAME COMMUNITY COLLEGE IN FISCAL YEAR 2018

Dist. No.	District/College	FY 17	FY 17	FY 17 HS DC Seniors Enrolling in Same Institution in FY 18		Of FY 17 HS DC Seniors Enrolling in Same Institution, Students Taking at Least One Remedial Course*	
		All HS Students Enrolled in DC	HS Seniors Enrolled in DC	Number	Percent	Number	Percent
503	Black Hawk	1,258	985	256	26.0%	91	35.5%
518	Carl Sandburg	431	301	63	20.9%	16	25.4%
508	City Colleges of Chicago	(3,083)	(2,769)	(221)	(8.0%)	(70)	(31.7%)
02	Harold Washington	508	441	28	6.3%	12	42.9%
04	Harry S Truman	269	254	18	7.1%	8	44.4%
01	Kennedy-King	235	223	11	4.9%	6	54.5%
03	Malcolm X	303	287	20	7.0%	8	40.0%
05	Olive-Harvey	348	336	13	3.9%	7	53.8%
06	Richard J. Daley	703	581	28	4.8%	9	32.1%
07	Wilbur Wright	717	647	103	15.9%	20	19.4%
502	College of DuPage	5,387	4,820	782	16.2%	261	33.4%
532	College of Lake County	1,366	1,202	293	24.4%	162	55.3%
507	Danville Area	939	622	192	30.9%	46	24.0%
509	Elgin	289	269	168	62.5%	40	23.8%
512	Harper	4,017	3,562	741	20.8%	68	9.2%
540	Heartland	865	662	201	30.4%	69	34.3%
519	Highland	987	734	120	16.3%	60	50.0%
514	Illinois Central	1,854	1,450	532	36.7%	92	17.3%
529	Illinois Eastern	(1,466)	(984)	(260)	(26.4%)	(17)	(6.5%)
04	Frontier	714	465	61	13.1%	4	6.6%
01	Lincoln Trail	212	121	60	49.6%	6	10.0%
02	Olney Central	242	164	65	39.6%	5	7.7%
03	Wabash Valley	298	234	74	31.6%	2	2.7%
513	Illinois Valley	975	743	233	31.4%	77	33.0%
530	John A. Logan	1,072	817	258	31.6%	60	23.3%
539	John Wood	307	256	76	29.7%	18	23.7%
525	Joliet Junior	3,855	3,386	776	22.9%	328	42.3%
520	Kankakee	638	513	96	18.7%	41	42.7%
501	Kaskaskia	2,817	1,946	363	18.7%	96	26.4%
523	Kishwaukee	556	451	173	38.4%	63	36.4%
517	Lake Land	1,631	1,287	439	34.1%	146	33.3%
536	Lewis and Clark	4,046	3,014	415	13.8%	82	19.8%
526	Lincoln Land	1,954	1,567	316	20.2%	127	40.2%
528	McHenry County	1,527	1,442	281	19.5%	53	18.9%
524	Moraine Valley	2,475	2,178	229	10.5%	89	38.9%
527	Morton	577	552	99	17.9%	56	56.6%
535	Oakton	800	718	122	17.0%	63	51.6%
505	Parkland	1,068	902	275	30.5%	100	36.4%
515	Prairie State	552	492	71	14.4%	26	36.6%
521	Rend Lake	1,047	717	325	45.3%	44	13.5%
537	Richland	885	684	162	23.7%	68	42.0%
511	Rock Valley	681	576	225	39.1%	28	12.4%
506	Sauk Valley	758	611	181	29.6%	63	34.8%
531	Shawnee	558	386	142	36.8%	32	22.5%
510	South Suburban	817	761	58	7.6%	31	53.4%
533	Southeastern Illinois	580	364	74	20.3%	9	12.2%
522	Southwestern Illinois	2,556	2,021	394	19.5%	143	36.3%
534	Spoon River	253	203	72	35.5%	9	12.5%
504	Triton	736	640	95	14.8%	46	48.4%
516	Waubonsee	<u>2,234</u>	<u>1,956</u>	<u>426</u>	<u>21.8%</u>	<u>154</u>	<u>36.2%</u>
TOTALS		57,897	47,543	10,205	21.5%	3,044	29.8%

*Data are a subgroup to FY 17 HS DC Seniors Enrolling in Same Institution in FY 18

SOURCE OF DATA: ICCB Centralized Data System--Annual Enrollment and Completion (A1) Data